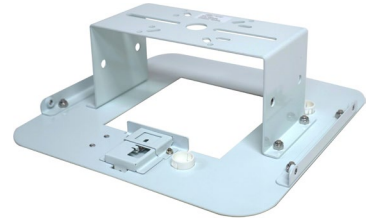




Universal AP Clamp Mount ATS-04052 ATS-APMNT-UNIV-CS

Wi-Fi Network Clamping Mount System is designed to optimize space and reduce interference in high-density environments.



Features

- New adjustable clamping arms
- Removable clamping bracket
- AP can be secured using cable or straps
- Includes integrated holes for securing mount to permanent building structure via chains or safety cable
- Compatible with various AP models due to adjustable mounting configuration

Benefits

- Universal compatibility
- Tool-less access point installation
- Simple, one-person installation
- Flexible mounting options: All-Thread, I-Beam Clamps, Conduit (with appropriate fittings, not provided), Gangbox, etc.

Mechanical Specifications

- Dimensions: 13.23" x 13.23" x 7.20" (335.91 x 335.91 x 182.82mm)
- Weight (without AP): 5.75 lbs (2.60 kg.)
- Material: Steel, ABS
- Color: White
- Installation: All-Thread, I-Beam Clamps, Conduit (with appropriate fittings not provided), Gangbox, Chain Mounting (not included), Wall Mounting (with appropriate hardware)
- Equipment Installation: AP Mounting Feet onto included Mounting Brackets

Environmental Specifications

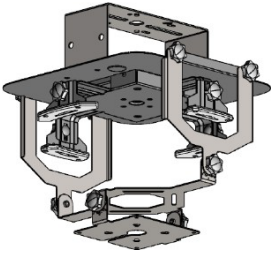
Installation Environment: Indoor or Outdoor

Warranty

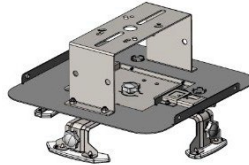
1 Year Limited

Compatible Access Points

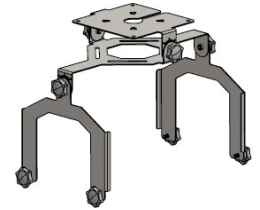
Arista C-330; Arista C-460; Arista C-230; Arista C-360; Aruba/HP AP-518; Aruba/HP AP-535; Aruba/HP AP-555; Aruba/HP AP-615; Aruba/HP AP-635; Aruba/HP AP-655; Aruba/HP AP-675; Aruba/HP AP-677; Aruba/HP AP-679; Aruba/HP AP-735; Aruba/HP AP-755; Cisco Catalyst 9120AXI; Cisco Catalyst 9130AXI; Cisco Catalyst 9136i; Cisco CW9164; Cisco CW9166; Cisco 9166D1; Cisco 9124AXI; Cisco 9165d; Cisco Meraki MR36; Cisco Meraki MR46; Cisco Meraki MR56; Cisco Meraki MR57; Cisco Meraki MR72; Cisco Meraki MR86; Extreme AP3865; Extreme AP3000X; Mist AP43; Mist AP45; Mist AP32; Mist AP24; Mist AP34; Mist AP47; Mist AP47D; Mist AP64



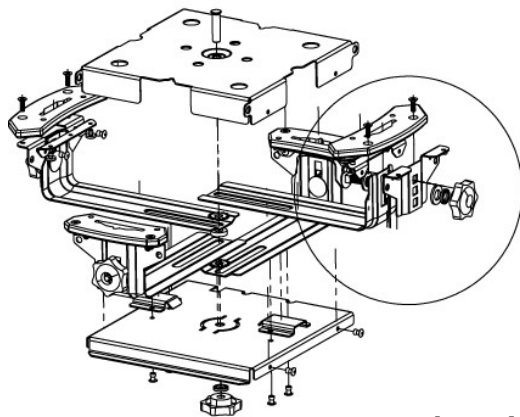
Full Mount



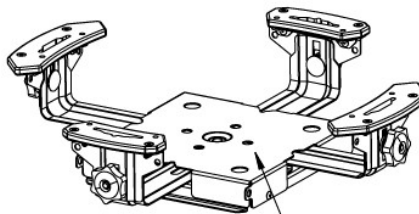
AP Clamping Mount



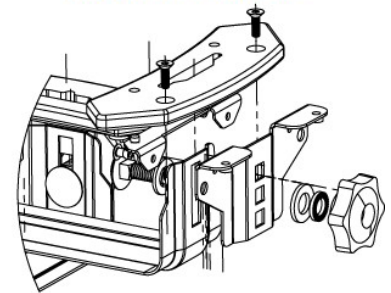
Antenna Retrofit Mount



Clamping Mechanism



Arm Assembly



Arms adjustable up and down and in and out to universally fit hardware

