



Catalog # 218

4 IN. SQUARE WELDED BOXES - 1-1/2 IN. DEEP WITH ARMORED CABLE

CABLE/METAL CLAD/FLEX CLAMPS 600V, FS, FLUSH

APPLICATIONS

RACO® Boxes are installed in walls or ceilings for lighting fixtures, switches or receptacles Square boxes are used where multiple conductor runs are split into two or more directions to bring power to a number of electrical devices

FEATURES

- Reference the Box Selection section in the front of this catalog for complete description of bracket types and features
- Combination screw heads provide for faster installation

CERTIFICATIONS



COMPLIANCES

All RACO® single gang, two gang, 4 in. square, and single gang gangable UL listed steel boxes are acceptable for use in 2-hour fire rated walls. For additional information, consult UL "Fire Resistance Directory" or the UL website at www.ul.com 600V Per UL 514-A, suitable for use without a bonding jumper in circuits up to 600 volts

FIRE RESISTANCE

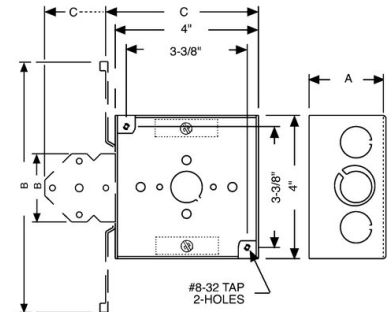
Acceptable for use in 2-hour rated walls

SPECIFICATIONS

WIRING SYSTEM:	ARMORED CABLE/METAL CLAD/MCI-A/FLEX
CABLE PRIOUTS:	4
BRACKET TYPE:	FS, FOR METAL OR WOOD STUDS
BRACKET SETBACK):	FLUSH
DRAWN OR WELDED:	WELDED
RAISED GROUND:	NO
SIDE KNOCKOUT(S):	(2) 1/2 IN. & (1) TKO®
BOTTOM KNOCKOUTS(S):	(1) 1/2 IN.

PRODUCT MEASUREMENTS

DEPTH:	1-1/2 IN.
CUBIC INCHES (CM³):	21.0 (344.1)
WT. EA. (LBS.):	0.872
PRODUCT LENGTH (IN.):	1.56
PRODUCT WIDTH (IN.):	6.88
PRODUCT HEIGHT (IN.):	4.38



DRAWING DIMENSIONS

DIMENSION A:	1-1/2 IN.
DIMENSION B:	6-7/8 IN.
DIMENSION C:	4-3/8 IN.

PACKAGING

MINIMUM PACK QTY.:	25
STD. PKG.:	25
PRODUCT UPC-A LABELED:	NO
WEIGHT (LBS. PER/C):	87.20
SHIP CARTON LENGTH (IN.):	16.13
SHIP CARTON WIDTH (IN.):	7.75
SHIP CARTON HEIGHT (IN.):	11.25
CTN WEIGHT (LBS.):	21.80
PALLET QTY:	1650
UPC NUMBER:	050169902189
I2OF5:	50050169902184

