

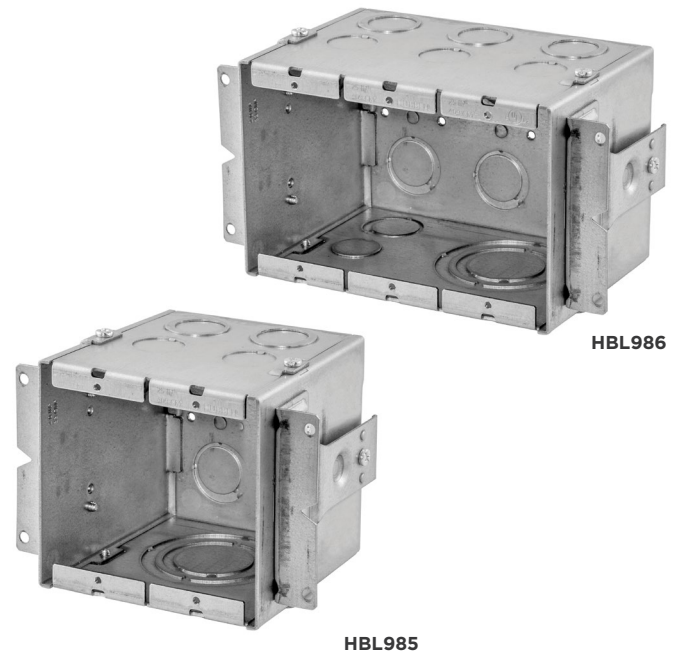
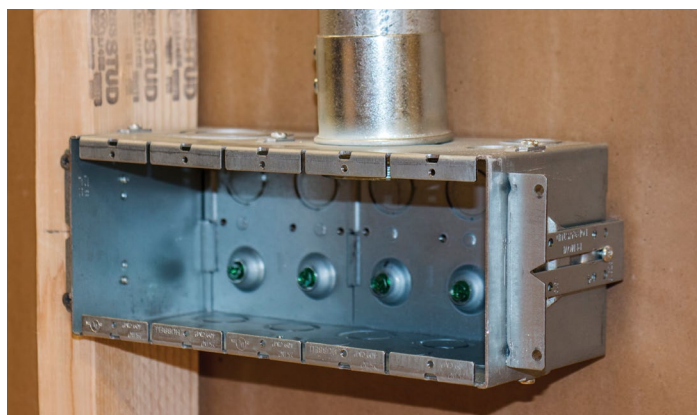
## Gangable AV Wall Box

- 4 in. depth accepts any device
- Knockouts from 1/2 in. up to 2 in.
- Accepts low voltage partition
- NEMA spaced device mounting, accepts industry
- Adjustable stud mounting brackets and far side support
- Suitable for masonry application

The Hubbell Gangable AV Wall Boxes are the ideal solution for in wall applications requiring AV, data and power. Concentric 1"- 2" knockouts combined with a 4 inch depth facilitate easy installation of AV cables incorporating pre-connectorized heads and bend radii required for high performance Category 6 and 6A cables.

Both the HBL985 and HBL986 are designed to be installed independently or ganged together to receive any number of devices, allowing them to accept any standard wallplate. Additionally, there is a ground screw available in each gang so that regardless of what services are brought into the box there is a means of grounding readily available.

The UL listed HBL989 low voltage partition is common to both boxes and is adjustable to accommodate any number of gangs.



### Features

- 2-gang option (HBL985)
- 3-gang option (HBL986)
- Knockouts from 1/2 inch up to 2 inch
- Raised ground provisions in each gang
- Accept low voltage partition (HBL989)
- NEMA spaced device mounting accepts industry standard wallplates
- 4 inch deep to accept practically any device
- Built in stud mounting brackets
- Adjustable stud brackets to accommodate different stud and sheetrock thicknesses
- Adjustable far side support

### Specifications

- cULus
- Suitable for masonry application



DATASHEET

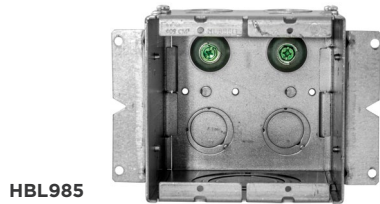
# Gangable AV Wall Box

## Ordering Information

### Two and Three Gangable av wallbox

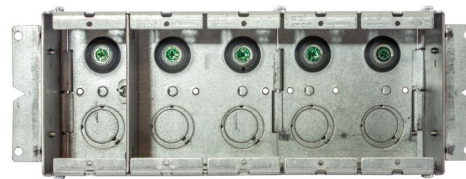
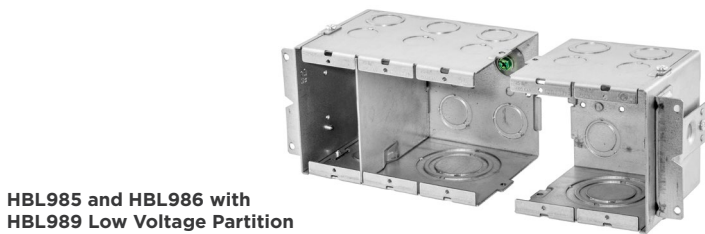
Box	Dimensions	Top Knockouts	Bottom Knockouts	Back Knockouts	Catalog Number
2-Gang, 2 in. KO, 54 in. <sup>3</sup> capacity	H: 4.21 in. W: 4.06 in. D: 4.0 in.	(2) 1/2 in. (2) 1/2 in. - 3/4 in. TKO*	(1) 1 in., 1-1/4 in., 1-1/2 in. and 2 in.	(2) 1/2 in. - 3/4 in. TKO	HBL985
3-Gang, 2 in. KO, 79 in. <sup>3</sup> capacity	H: 4.21 in. W: 5.87 in. D: 4.0 in.	(3) 1/2 in. (3) 1/2 in. - 3/4 in. TKO*	(1) 1/2 in. (1) 1/2 in. - 3/4 in. TKO* (1) 1 in., 1-1/4 in., 1-1/2 in. and 2 in.	(3) 1/2 in. - 3/4 in. TKO	HBL986
4-Gang, 2 in. KO, 104 in. <sup>3</sup> capacity	H: 4.21 in. W: 7.69 in. D: 4 in.	(4) 1/2 in. (4) 1/2 in. - 3/4 in. TKO	(1) 1/2 in. (1) 1/2 in. - 3/4 in. TKO (2) 1 in., 1 1/4 in., 1 1/2 in., 2 in.	(4) 1/2 in. - 3/4 in.	HBL987
6-Gang, 2 in. KO, 154 in. <sup>3</sup> capacity	4.21 in. 11.31 in. 4 in.	(6) 1/2 in. (6) 1/2 in. - 3/4 in. TKO	(1) 1/2 in. (1) 1/2 in. - 3/4 in. TKO (2) 1 in., 1 1/4 in., 1 1/2 in., 2 in.	(6) 1/2 in. - 3/4 in.	HBL988

\*TKO (Tangential Knockout)

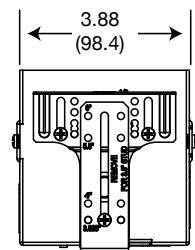
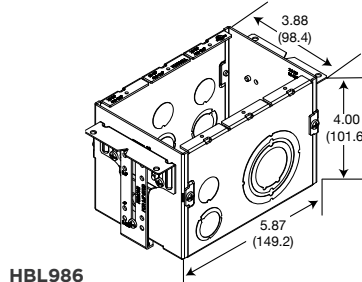
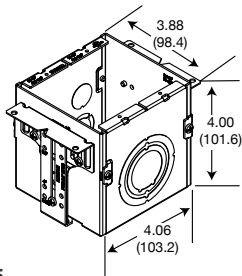


### Low Voltage Partition

For use with	Type	Catalog No.
HBL985, HBL986, HBL987 and HBL988	Solid divider With pass-thru capability	HBL989 HBL989AVD



### DIMENSIONS Inches (mm)



A proud member of the Hubbell family.

©2024 Wiring Device-Kellems. All rights reserved.  
Hubbell and the Hubbell logo are registered trademarks or trademarks of Hubbell Incorporated. All other trademarks are the property of their respective owners.  
40 Waterview Drive, Shelton, CT 06484  
www.hubbell.com/wiringdevice-kellems | 800-288-6000

EP-WDK-SPEC-EN-02052 | 04/2024