



The Evolution Junior is a lightweight version of the advanced Evolution floodlight. Featuring the same single bolt access and impressive photometric performance, it's compact form allows it to be utilised in a variety of hazardous area applications.

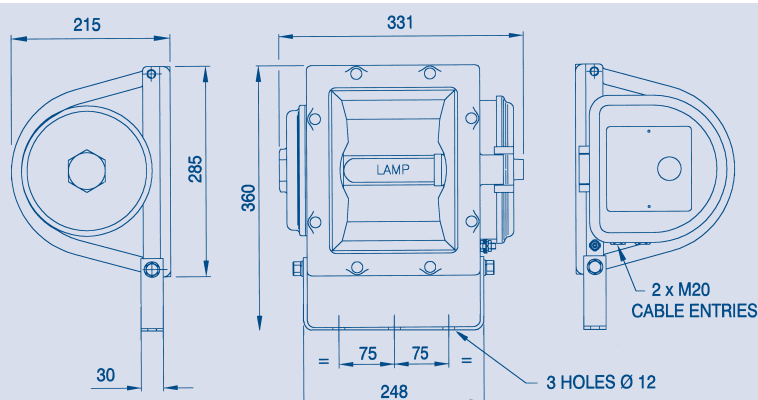
Standard Specification		Features
Type of Protection	Ex d e (Flameproof, Increased Safety)	Installation in gas groups IIA, IIB and IIC  Easy and quick access for maintenance  Simple, rapid lamp replacement and flamepath inspection  Exceptional photometric efficiency
ATEX Classification	Group II Category 2 GD	
Area Classification	Zone 1 and Zone 21 areas to EN 60079-10-1 with installation to EN 60079-14. Gas Groups IIA, IIB and IIC	
Certificate	EC Type Examination Certificate Baseefa11ATEX0040	
Coding	Ⓔ II 2 GD Ex d e IIC Refer to table for T rating and Ambient	International Approvals  ATEX, GOST CEPEL and TIS
Enclosure	Aluminium alloy LM6 to BS 1490 (AC44100) All fastenings A4 stainless steel Toughened glass window	
Reflector	Wide beam, high purity anodised aluminium	
Entry	2 x M20 cable entries	
Termination	3 core 6mm <sup>2</sup> max. conductor with looping	
Installation	Stirrup mounting bracket	
Windage	0.094m <sup>2</sup>	
Control Gear	Internal copper/iron with PFC correction capacitor	
Relamping	Access via hinged end cover on release of single screw	
Burning Position	Universal for HID	
Ingress Protection	IP66/67 to EN 60529	
Electrical Supply	220, 230, 240, 254V 50Hz (HID)	

Std. Cat No.	Wattage	Lamp	Lampholder	T Class	Ambient °C	Weight
EVJD/070/MS	70W	HPS and Metal Halide	E27	T4	40	12kg
				T3	55	12kg

**Note:** Please specify voltage at time of enquiry/order

#### Options – Suffix to Catalogue No.

/60	60Hz
/M25	M25 cable entries
/P	Marine grade polyester paint coating (RAL 7043)
/LT	Low temperature version -50°C (IIA & IIB only)



Accessories Should be ordered separately

Catalogue Order Code

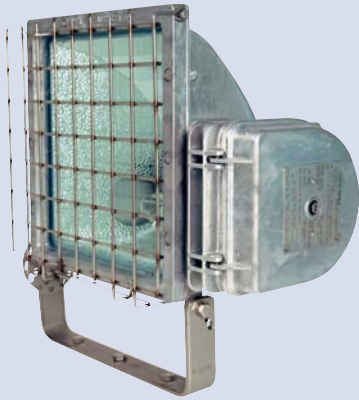
Pole mounting bracket assembly (48-70mm diameter poles)	SEVJ4-0003
Anti-glare shield	SEVJ4-0001
Wire guard	SEVJ4-0002

Product design and specifications are subject to change without notice, please check the Chalmit® website for latest specifications.

# EVOLUTION RANGE

3

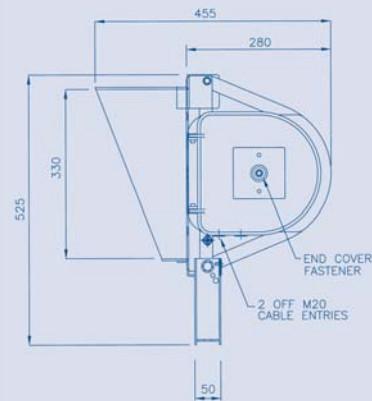
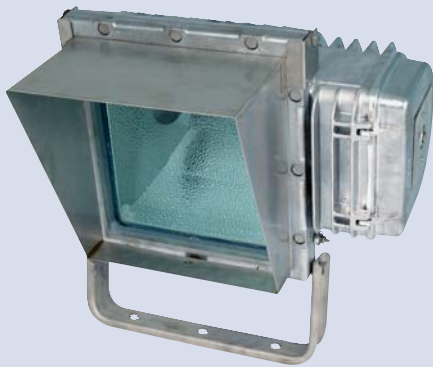
## Evolution II & Evolution Guards and Shields



Evolution II	
Wire Guard	SEV04-0020
Combined Anti-Glare Shield and Wire Guard	SEV24-0001
Evolution	
Anti-Glare Shield	SEV04-0002
Wire Guard	SEV04-0003
Combined Anti-Glare Shield and Wire Guard	SEV04-0008

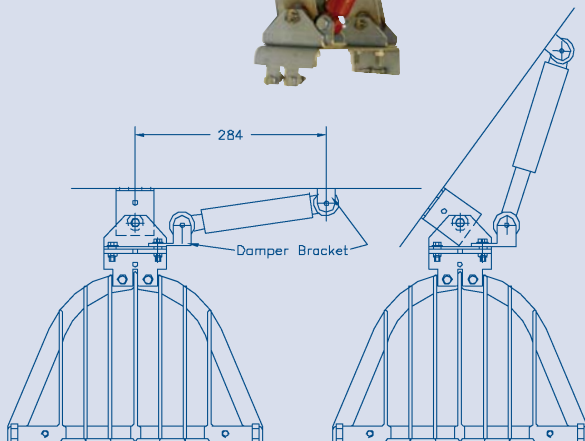
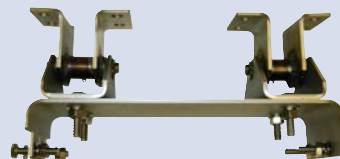
## Evolution Anti-Glare Shield

## Combined Anti-Glare Shield and Wire Guard

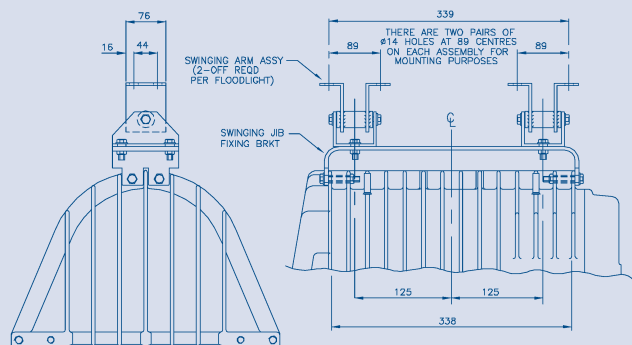


## Swing Jib Damper & Bracket Assembly (220-254V only)

Evolution only



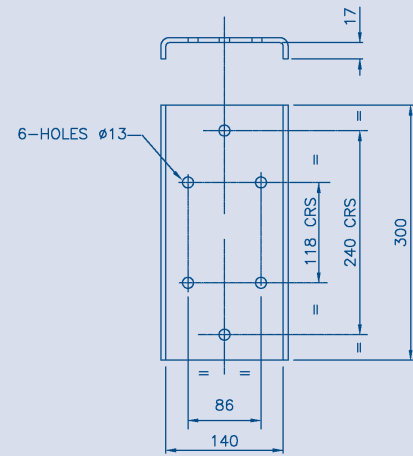
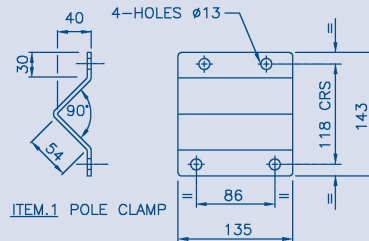
Damper assembly - SEV01-0015



Bracket assembly - SEV04-0009

## Pole Mounting Bracket Assembly

Cat No. SEVO4-0001



## 284 Retrofit Bracket

Cat No. SEVO1-0001

