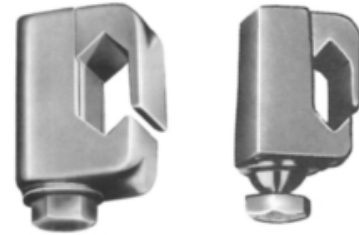


Connector, Vise-Type

By FARGO
Catalog # [GC209](#)

Grounding Vise-Type Connector



*Representative Image

Features

- Side Opening Jaw facilitates easy installation.

Application

Transformer Ground Lug

General

Bolt Head Type	Hex
Bolt Installation Torque (Recommended)	240 in-lbs
Cover Available	No
Inhibitor Loaded	No
Material	Bronze
Material - Body	Bronze
Material - Bolt	Stainless Steel
Material - Hardware	Stainless Steel
Material - Keeper	Bronze
Number of Stud Threads	13
Plating	No
Product Category	Vise Type Connectors
UPC	096359307310

Dimensions

Bolt Diameter	0.31
Diameter - Bolt	0.31 in
Diameter - Bolt Head	0.56 in
Diameter - Stud	0.5 in
Dimensions	1.750 in x 1.125 in x 1.500 in
Height	1.500 in
Length	1.750 in
Length - Nut Flat-To-Flat	0.56 in
Weight	0.380 lb
Width	1.125 in

Conductor Related

Conductor Diameter - Maximum	0.528 in
Conductor Diameter - Minimum	0.229 in
Conductor Diameter Range	0.229 - 0.528
Conductor Type	Copper

Logistics

Pallet Quantity	4000
-----------------	------

Product Assets

[Catalogs - Distribution Connectors \(CA05127E\)](#)
[Sales Drawings - CC-20597](#)

Related Products

[GC208 - Connector, Vise-Type](#)
[GC207 - Connector, Vise-Type](#)