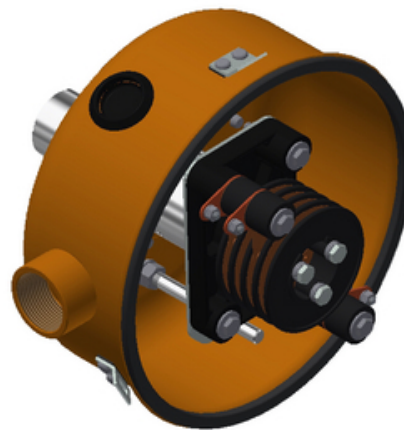




ECR030-10 Enclosed Compact Slip Ring Assembly 30 Amp 10 Pole

By Gleason Reel
Catalog # [ECR030-10](#)



Enclosed Compact Slip Ring Assembly 30 Amp 10 Pole

General

Number Of Poles 10
Series Enclosed Compact ECR

Electrical Ratings

Current / Amperage Rating 30 A

Product Assets

[Brochures - Compact 30 & 50 Slip Rings 30A or 50A, 600V, 1.5" \(38mm Bore\)](#)

[Video - Gleason Reel Staging and Rigging Applications for the Theater/Entertainment Industry](#)