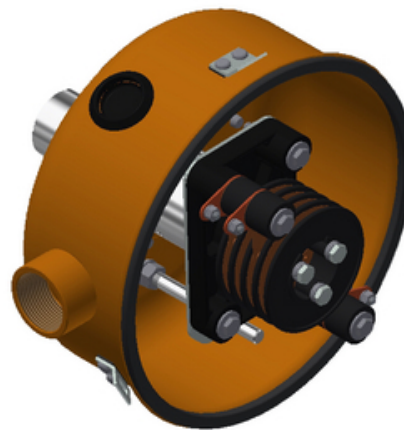




## ECR030-20 Enclosed Compact Slip Ring Assembly 30 Amp 20 Pole

By Gleason Reel  
Catalog # [ECR030-20](#)



Enclosed Compact Slip Ring Assembly 30 Amp 20 Pole

### General

Number Of Poles 20  
Series Enclosed Compact ECR

### Electrical Ratings

Current / Amperage Rating 30 A

### Product Assets

[Brochures - Compact 30 & 50 Slip Rings 30A or 50A, 600V, 1.5" \(38mm Bore\)](#)

[Video - Gleason Reel Staging and Rigging Applications for the Theater/Entertainment Industry](#)