



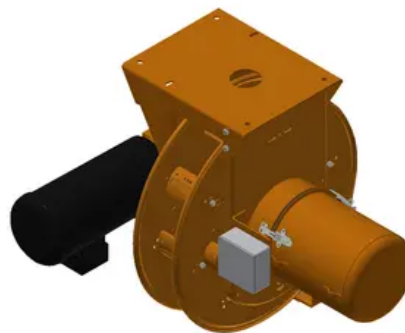
P Pendant Station Reels

By Gleason Reel

Automatically raise and lower pushbutton stations for floor controlled cranes and hoists. Wind and store up to 120' of cable. Average retrieval speed - 135 fpm (40.5 mpm). Reversible 1800 RPM, 230-460 VAC drive motor. Electro-magnetic brake holds cable in place when motor is de-energized. Capacities from 2-36 conductor cables, No. 16 through No. 10 AWG wire size. Cable not included.

Features

- Fast and easy brush replacement
- Weatherproof, dust-tight NEMA 4 (IP-54) Slip Ring housing
- Easily removable Slip Ring covers for quick inspection or service
- Entire Slip Ring assembly can be replaced as a unit if necessary
- Pre-lubricated, self-aligning bearings
- Durable baked polyester finish
- Electromagnetic brake holds cable in place when motor is de-energized



- NEMA IV two-way limit switch controls up and down stops

Product Assets

[Brochures - MRW Reeling Systems](#)

[Brochures - MOTOR DRIVEN PENDANT STATION REELS](#)

[Installation Manuals - P24 Pendant Reel Instructions P24](#)

[Installation Manuals - P14 Pendant Reel Instructions P14](#)

[Installation Manuals - P21 Pendant Reel Instructions P21](#)

[Installation Manuals - P28 Pendant Reel Instructions P28](#)

[Installation Manuals - P16 Pendant Reel Instructions P16](#)

[Installation Manuals - P18 Pendant Reel Instructions P18](#)

[Specifications - P Pendant Station Reels](#)



A Hubbell brand

©2025 Hubbell Incorporated. All rights reserved
GRD-PID3123366-SPEC-EN | REV 7/2025