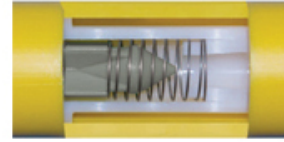
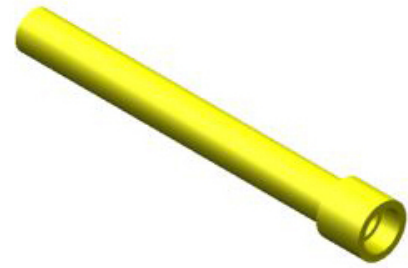


## EFV Model P58 with SERIES 1100

By Gas Breaker  
Catalog # 20313GB

EFV #P58 1" CTS .099, 2406 W/ 1" CTS SOCKET, SERIES 1100



### Features

- Work with the flow of natural gas as the sensing source
- Activate when a line rupture causes an excess flow condition
- Automatically reset and resume normal operation after repairs are made using a slight gas bypass to re-pressurize the line. Install in minutes with standard tools
- Operate within your normal service line sizing requirements to avoid tripping by snap-acting loads
- Higher capacity EFVs can accommodate future increases in gas loads.
- Maintain stability under turbulent flow conditions by using a unique, dynamically balanced float
- Available for virtually all pressures and service line capabilities
- In-line installation makes them tamper-proof
- Can be fabricated with fitting and piping materials from most manufacturers

### General

Material PE Polyethylene (2406/2708)

### Product Assets

[Catalogs - Gas Breaker - Automatic Safety Valves for Gas Service Lines](#)