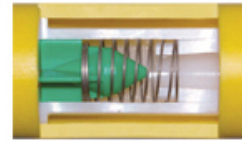
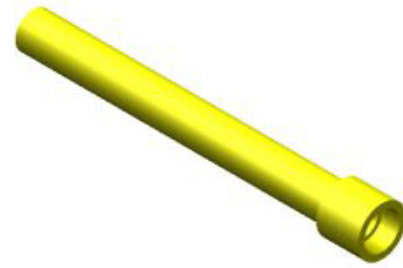


EFV Model P58 with SER 1800

By Gas Breaker
Catalog # 20352GB

EFV #P58 1" IPS SDR 11, 2406 W/1" IPS SOCKET, 18", SER 1800,



Features

- Work with the flow of natural gas as the sensing source
- Activate when a line rupture causes an excess flow condition
- Automatically reset and resume normal operation after repairs are made using a slight gas bypass to re-pressurize the line. Install in minutes with standard tools
- Operate within your normal service line sizing requirements to avoid tripping by snap-acting loads
- Higher capacity EFVs can accommodate future increases in gas loads.
- Maintain stability under turbulent flow conditions by using a unique, dynamically balanced float
- Available for virtually all pressures and service line capabilities
- In-line installation makes them tamper-proof
- Can be fabricated with fitting and piping materials from most manufacturers

General

Material PE Polyethylene (2406/2708)

Product Assets

[Catalogs - Gas Breaker - Automatic Safety Valves for Gas Service Lines](#)