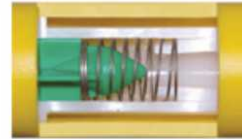
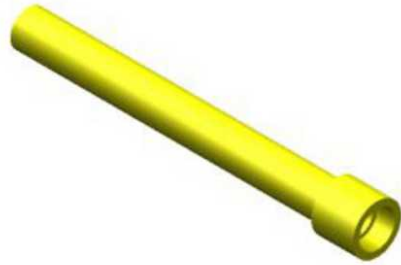




Excess Flow Valve # P58

By Gas Breaker
Catalog # 30070GB

Excess Flow Valve Model P58 1" IPS SDR 11, 2406, W/1" IPS SOCKET CPLG., 18" LONG, with Series 1800 Valve



Features

- Work with the flow of natural gas as the sensing source
- Activate when a line rupture causes an excess flow condition
- Automatically reset and resume normal operation after repairs are made using a slight gas bypass to re-pressurize the line
- Non-bypass models are also available. These models are reopened by correcting the excess flow condition and manually applying back pressure to the line and valve.
- Install in minutes with standard tools
- Operate within your normal service line sizing requirements to avoid tripping by snap-acting loads
- Higher capacity EFVs can accommodate future increases in gas loads.
- Maintain stability under turbulent flow conditions by using a unique, dynamically balanced float
- Available for virtually all pressures and service line capabilities
- In-line installation makes them tamper-proof
- Can be fabricated with fitting and piping materials from most manufacturers
- UL Listed 4DU5 for use on propane service line applications
- Accommodates pressures from 5 psi to 1000 psi (Depending on Series of EFV)
- Flow Ranges from 1,000,000 to 24,000,000 BTU
- Meet DOT 192.381 and MSS-SP-115
- MSS-SP-142 for excess flow valves for use in natural gas system
- Tested to, or in accordance with, ASTM F 1802
- Compatible with steel or plastic fittings and piping materials from most manufacturers

Application

1" IPS SDR 11, 2406, W/1" IPS SOCKET CPLG., 18" LONG

General

Material PE Polyethylene (2406/2708)

Dimensions

Length 18.00 in

Product Assets

[Catalogs - Gas Breaker - Automatic Safety Valves for Gas Service Lines \(HGUS-HGUS-EVF-CAT-EN-2022-00722\)](#)



A proud member of the Hubbell Family.

©2024 Hubbell Incorporated. All rights reserved.
GSBK-30070GB-SPEC-EN | REV 1/2024

