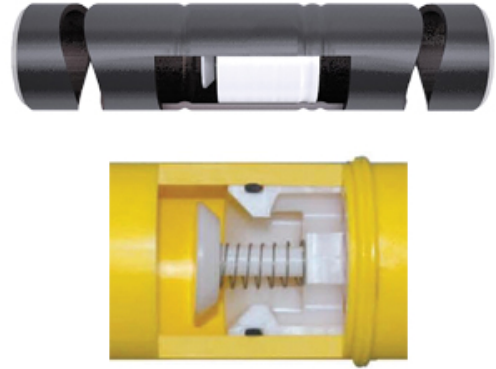


EFV Model S14 with SERIES 10000

By Gas Breaker
Catalog # 40179GB

EFV #S14 2" IPS SCH 40 WELD X WELD, 28" LONG, SERIES 10000



Features

- Work with the flow of natural gas as the sensing source
- Activate when a line rupture causes an excess flow condition
- Automatically reset and resume normal operation after repairs are made using a slight gas bypass to re-pressurize the line. Install in minutes with standard tools
- Operate within your normal service line sizing requirements to avoid tripping by snap-acting loads
- Higher capacity EFVs can accommodate future increases in gas loads.
- Maintain stability under turbulent flow conditions by using a unique, dynamically balanced float
- Available for virtually all pressures and service line capabilities
- In-line installation makes them tamper-proof
- Can be fabricated with fitting and piping materials from most manufacturers

General

Application 2" IPS SCH. 40 WELD X WELD,
28" LONG
Material Schedule 40 Steel

Dimensions

Length 28 in

Product Assets

[Catalogs - Gas Breaker - Automatic Safety Valves for Gas Service Lines](#)