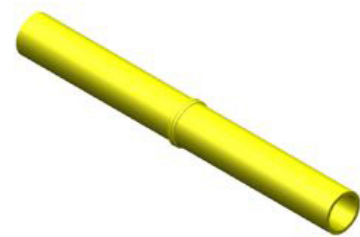




EFV Model P41 with SERIES 700

By Gas Breaker
Catalog # 50093GB

EFV #P41 1" IPS SDR 11 2406, 12" LONG, SERIES 700



Features

- Work with the flow of natural gas as the sensing source
- Activate when a line rupture causes an excess flow condition
- Automatically reset and resume normal operation after repairs are made using a slight gas bypass to re-pressurize the line. Install in minutes with standard tools
- Operate within your normal service line sizing requirements to avoid tripping by snap-acting loads
- Higher capacity EFVs can accommodate future increases in gas loads.
- Maintain stability under turbulent flow conditions by using a unique, dynamically balanced float
- Available for virtually all pressures and service line capabilities
- In-line installation makes them tamper-proof
- Can be fabricated with fitting and piping materials from most manufacturers

Application

1" IPS SDR 11, 2406, 12" LONG

General

Catalog Number	50093GB
Material	PE Polyethylene (2406/2708)

Dimensions

Length	12 in
--------	-------

Certifications And Compliance

Buy America(n) Qualified	BABA Compliant (All status valid till December 2024)
--------------------------	--

Product Assets

[Catalogs - Gas Breaker - Automatic Safety Valves for Gas Service Lines](#)
[Specifications - 50093GB](#)



A Hubbell brand