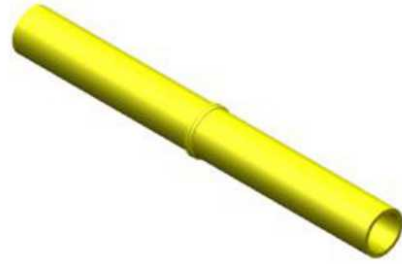




Excess Flow Valve Model P41, with Series 700 Valve

By Gas Breaker
Catalog # [50175GB](#)

Excess Flow Valve Model P41 1" CTS .099, 2406, 12" LONG,
with Series 700 Valve



Features

- Work with the flow of natural gas as the sensing source
- Activate when a line rupture causes an excess flow condition
- Automatically reset and resume normal operation after repairs are made using a slight gas bypass to re-pressurize the line
- Non-bypass models are also available. These models are reopened by correcting the excess flow condition and manually applying back pressure to the line and valve.
- Install in minutes with standard tools
- Operate within your normal service line sizing requirements to avoid tripping by snap-acting loads
- Higher capacity EFVs can accommodate future increases in gas loads.
- Maintain stability under turbulent flow conditions by using a unique, dynamically balanced float
- Available for virtually all pressures and service line capabilities
- In-line installation makes them tamper-proof
- Can be fabricated with fitting and piping materials from most manufacturers
- UL Listed 4DU5 for use on propane service line applications

General

Material PE Polyethylene (2406/2708)

Product Assets

[Catalogs - Gas Breaker - Automatic Safety Valves for Gas Service Lines \(HGUS-HGUS-EVF-CAT-EN-2022-00722\)](#)



A proud member of the Hubbell Family.

©2024 Hubbell Incorporated. All rights reserved.
GSBK-50175GB-SPEC-EN | REV 1/2024