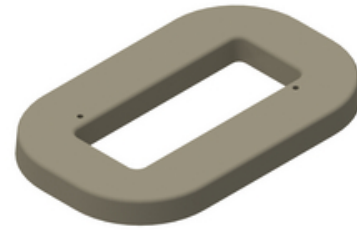




Polymer Concrete Mounting Pad For Hot Box

By HOT BOX
Catalog # [PH31551336A3S](#)

Hot Box Polymer Concrete Mount Pad - 31 X 54.5 X 3.25 13 X 36 Throat



*Representative Image

Features

- Save Time & Money - No forms to build or concrete to pour.
- Quick Installation - One trip to install Glass Pad and enclosure with no waiting for concrete to cure.
- Aesthetically Pleasing - Professional looking installation with matching enclosure and pad.

General

Heated?	No
Material	Polymer Concrete

Dimensions

Dimensions	54 in x 31 in x 3 in
Height	3 in
Length	54 in
Weight	137 lb
Width	31 in

Logistics

Packaging Type	Flat Pack
----------------	-----------

Product Assets

[Catalogs - Above Ground Enclosures - Pad Mounted Equipment Solutions](#)

[Literature - HOT BOX® Aluminum Drop Over Enclosures](#)

[Sales Drawings - Polymer Concrete Base](#)