



DATE:	LOCATION:
TYPE:	PROJECT:
CATALOG #:	

WIR SOFTWARE SUITE

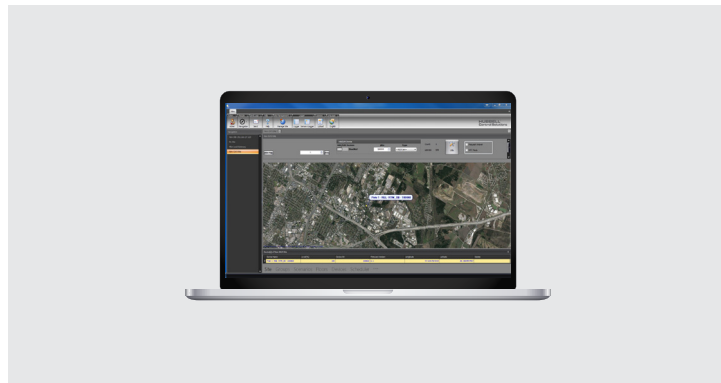
WISCAPE® GATEWAY EXPRESS AND BACNET SOFTWARE

FEATURES

- Windows®-based client application with intuitive Graphical User Interface (GUI)
- Easy management of devices, groups, scenarios and schedules
- Geographical mapping of devices on maps or layouts
- Multi-site management
- Wireless device discovery with fixture blinking
- Cloning of devices parameters
- Realtime logging of wireless network traffic
- Optional Gateway BACnet™ Interface



wiSCAPE™



RELATED PRODUCTS

- [wiSCAPE Wireless Gateway](#)
- [wiSCAPE Wireless External Fixture Module](#)
- [wiSCAPE Internal Fixture Module](#)
- [wiSCAPE Low Voltage Module](#)
- [wiSCAPE External Photocell Module](#)
- [wiSCAPE RGBW Module](#)

SPECIFICATIONS

PC/LAPTOP HARDWARE REQUIREMENTS (MINIMUM)

- Operating System: 64-Bit
- Processor: 1 GHz or faster
- RAM: 2 GB
- Hard Disk Space: 32 GB or larger
- Graphics Card: Compatible with DirectX 9 or later with WDDM 1.0 driver
- Display: 800x600
- Internet Connection: Required to perform Windows 10 and wiSCAPE Software updates

PC/LAPTOP SOFTWARE REQUIREMENTS

- Windows 10 64-Bit Operating System

OPERATION

- wiSCAPE Express
 - Create device groups, scenarios, schedules (time-based/astronomical)
 - Name devices

OPERATION(CONTINUED)

- wiSCAPE Express (Continued)
 - Assign devices to groups and scenarios
 - Configure device parameters
 - Clone device settings
 - Individual and group device control
 - Geographical mapping of devices on maps or layouts
- wiSCAPE BACnet¹
 - Supports binary and analog object types
 - Luminaire ON/OFF control
 - Luminaire 0-10V dimming control and feedback
 - Luminaire metering: voltage, current, power, power factor, consumption and lamp burn-time

- wiSCAPE BACnet¹ (Continued)
 - Alarm notifications
 - Run scenarios
 - Set luminaire setpoint levels
 - Run generic timers

WARRANTY

- 5 year limited
- See [HCS Standard Warranty](#) for additional information

Notes:

- 1 Current wiSCAPE BACnet PICS can be found [online](#)



WIR SOFTWARE SUITE

WISCAPE® GATEWAY EXPRESS AND BACNET™ SOFTWARE

ORDERING GUIDE

Example: WIR-EXPRESS

CATALOG #

WIR-EXPRESS

Model

WIR-EXPRESS wiSCAPE Express Software - Single Computer License

WIR-BACNET wiSCAPE BACnet Software Module License for GW3 Gateways

ADDITIONAL INFORMATION

Product Comparison



DATE:	LOCATION:
TYPE:	PROJECT:
CATALOG #:	

WIR SOFTWARE SUITE

WISCAPE® GATEWAY EXPRESS AND BACNET™ SOFTWARE

ADDITIONAL INFORMATION (CONTIUED)

Product Comparison

FEATURE	wiSCAPE EXPRESS	wiSCAPE ENTERPRISE
Create Groups, Command Scenarios, Schedules (Time-Based/Astronomical)	●	●
Name Devices	●	●
Assign Devices to Groups and Scenarios	●	●
Configure Device Parameters	●	●
Meter Devices	●	●
Individual & Group Device Control	●	●
Geographical Mapping of Devices on Maps or Plans	●	●
Windows® based Client Graphical User Interface (GUI)	●	●
Web-Browser based Client Graphical User Interface (GUI)		●
Secure Multi-Concurrent User Logins		●
Customizable Dashboard with Multi-Site Status		●
Dynamic Site Control		●
Customizable Security Roles, Users and Rules		●
Security User Logs		●
Individual & Multi-Site Energy Reports with Graphs		●
Customizable Site/Device Alarms with SMS & Email Notifications		●
Built-in Service Crew Maintenance Ticketing System		●