



# HDL106N

Ex e LED Floodlight

The **HDL106N** is a lightweight and compact Zone 1 floodlight which can be interlinked to provide an effective LED alternative to traditional HID floodlights, up to 250W.

With a variety of beam options, extensive ambient range and marine grade construction, this is a global lighting solution to suit any harsh and hazardous application.



International Approvals

## Mounting Options

Floodlight. Pendant. Bulkhead. High Bay. Pole/Column. Road Lighting.

## Standard Specification

HDL106N Ex e LED Floodlight

Type of Protection	Ex e mb (Increased Safety, Encapsulation) Ex tb (Dust Protected Enclosure)
ATEX Classification	Group II Category 2 GD
Area Classification	Zone 1 and 21 areas to EN 60079-10-1 and EN 60079-10-2 with installation to EN 60079-14
Certificate	EU Type Examination Certificate Sira 09ATEX5159X IECEx Certificate of Conformity IECEx SIR 09.0064X
Coding	Ex e mb IIC T4/T3 Gb Ex tb IIIC T103°C Db
Ambient °C	-20 to +50 (T4) / +59.5 (T3)
Enclosure	LM6 Aluminium with epoxy powder finish (RAL 7035) and Polycarbonate diffuser
Entry	2 x M20 cable entries
Termination	3 core 4mm <sup>2</sup> max. conductor with looping
Installation	Stirrup mounting bracket
Control Gear	Electronic Driver
Colour Temperature (CCT)	Refer to Ordering Matrix
Colour Rendering Index (Ra)	>70
Maintenance	M8 Hex Head and M6 SKT Head
Ingress Protection	IP66/67 to EN 60529
Surge Protection	4kV line to line, 6kV line to earth
Electrical Supply	Refer to Ordering Matrix

## Features

- ◆ Highly **Energy Efficient**
- ◆ **Instant on** crisp white light output
- ◆ **Modular design** allowing up to four interlinked luminaires, each providing a delivered output > 5500lm
- ◆ **Lower power consumption** than HID lamps
- ◆ **Lightweight** (6kg per module) lighting solution
- ◆ **>150,000 maintenance free hours** at 25°C (L70)

HDL 106N						
Version*	Voltage	Beam Pattern***	Mount	Light (CCT)	Cable Entries	Other Options
<b>0</b> – 24 LEDs [27W] <b>1</b> – 48 LEDs [53W] <b>2</b> – 96 LEDs [103W] <b>3</b> – 144 LEDs [155W] <b>4</b> – 192 LEDs [206W]	<b>H</b> – 100-254V AC <b>L</b> – 18-54V AC/DC**	<b>N</b> – Narrow (6565lm) <b>M</b> – Medium (5882lm) <b>W</b> – Wide (5624lm) <b>X</b> – Extra Wide (5547lm)	<b>H</b> – Horizontal Mount [single unit] <b>V</b> – Vertical Mount [multiple units] <b>C</b> – Ceiling Mount	<b>W</b> – Cool White (5000K) <b>X</b> – Warm White (3000K)	<b>0</b> – M20 <b>5</b> – M25	<b>04</b> – RAL 7035 (Grey) <b>FG</b> – Glass front cover <b>BP</b> – Nickel plated brass plugs

\*Power consumption provided in square brackets

\*\*Upper ambient becomes +55°C

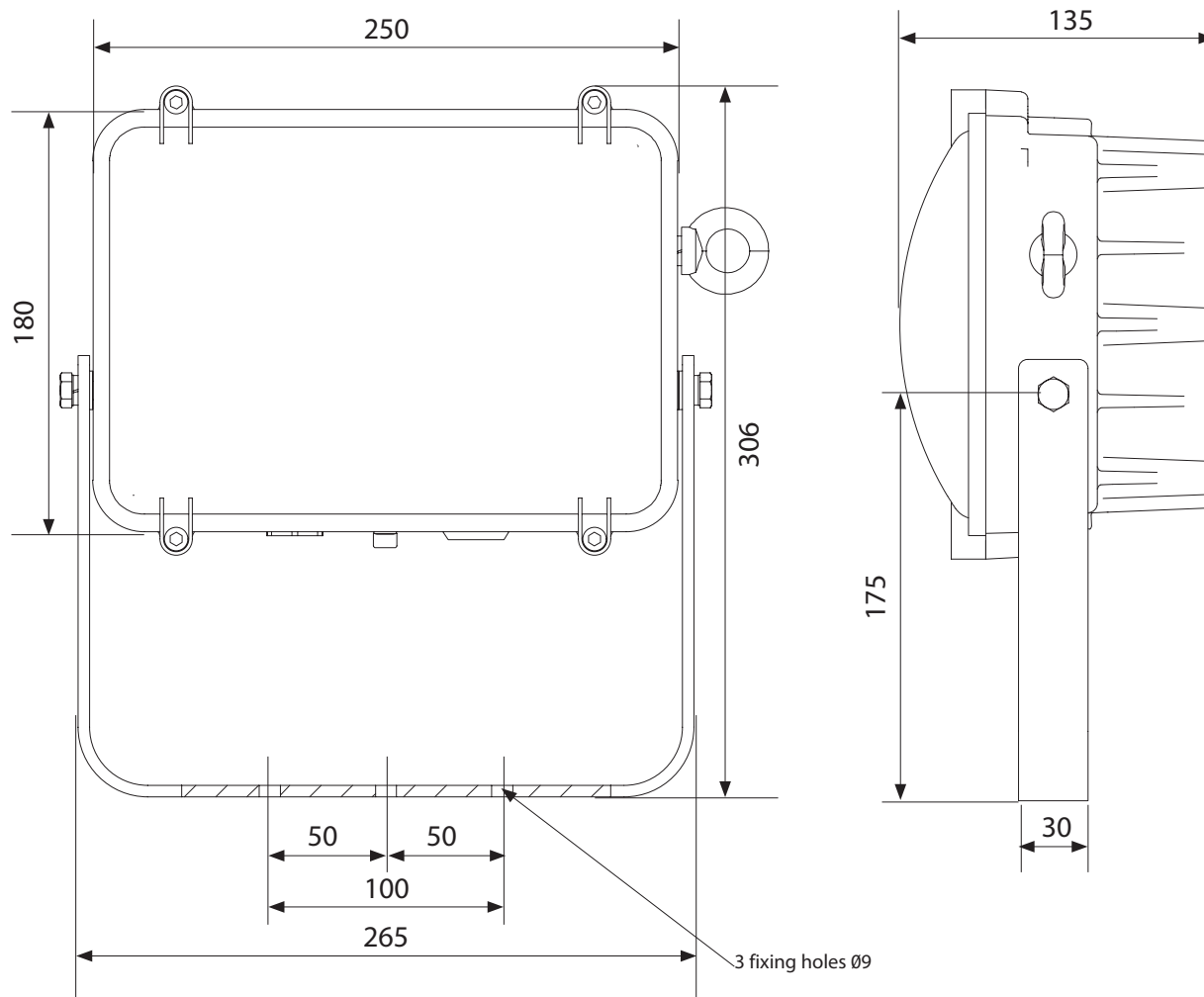
\*\*\*Delivered outputs based on single module 48LED version

Typical ordering reference: **HDL106N1HWHW004**

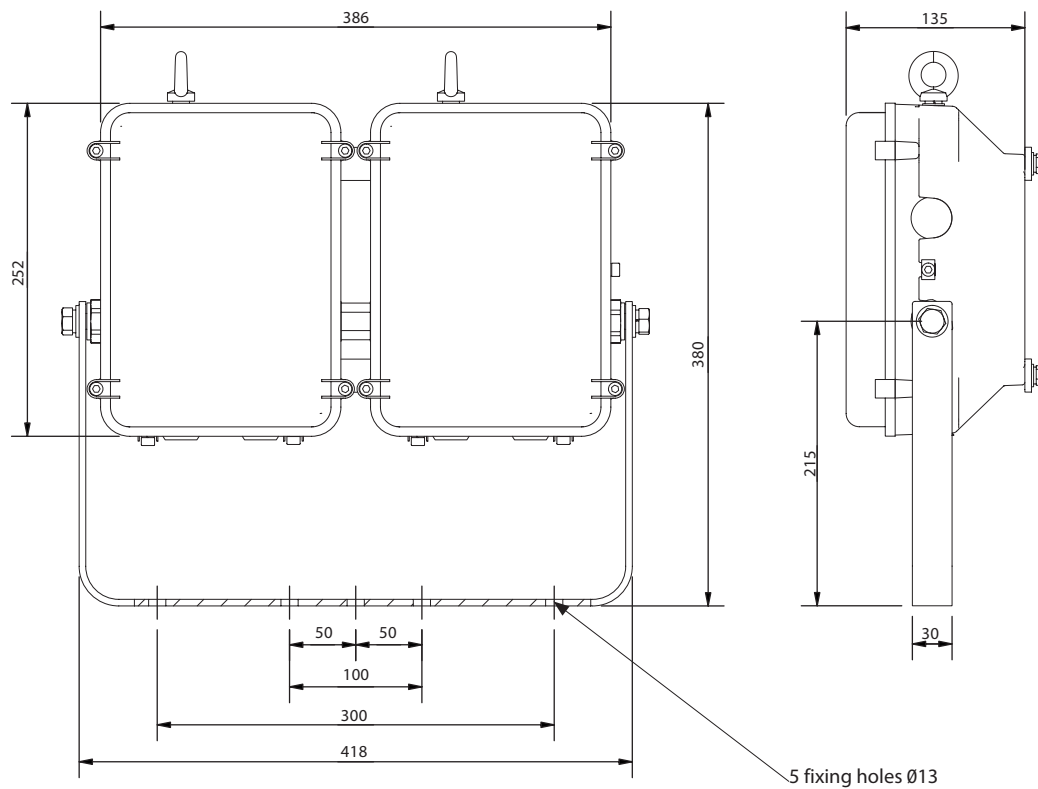
## Accessories Accessories should be ordered separately

	Order Code
Crane Damper Bracket (96 LEDs Twin Module)	<b>SHDL1-000002</b>
Crane Damper Bracket (144 LEDs Triple Module)	<b>SHDL1-000003</b>

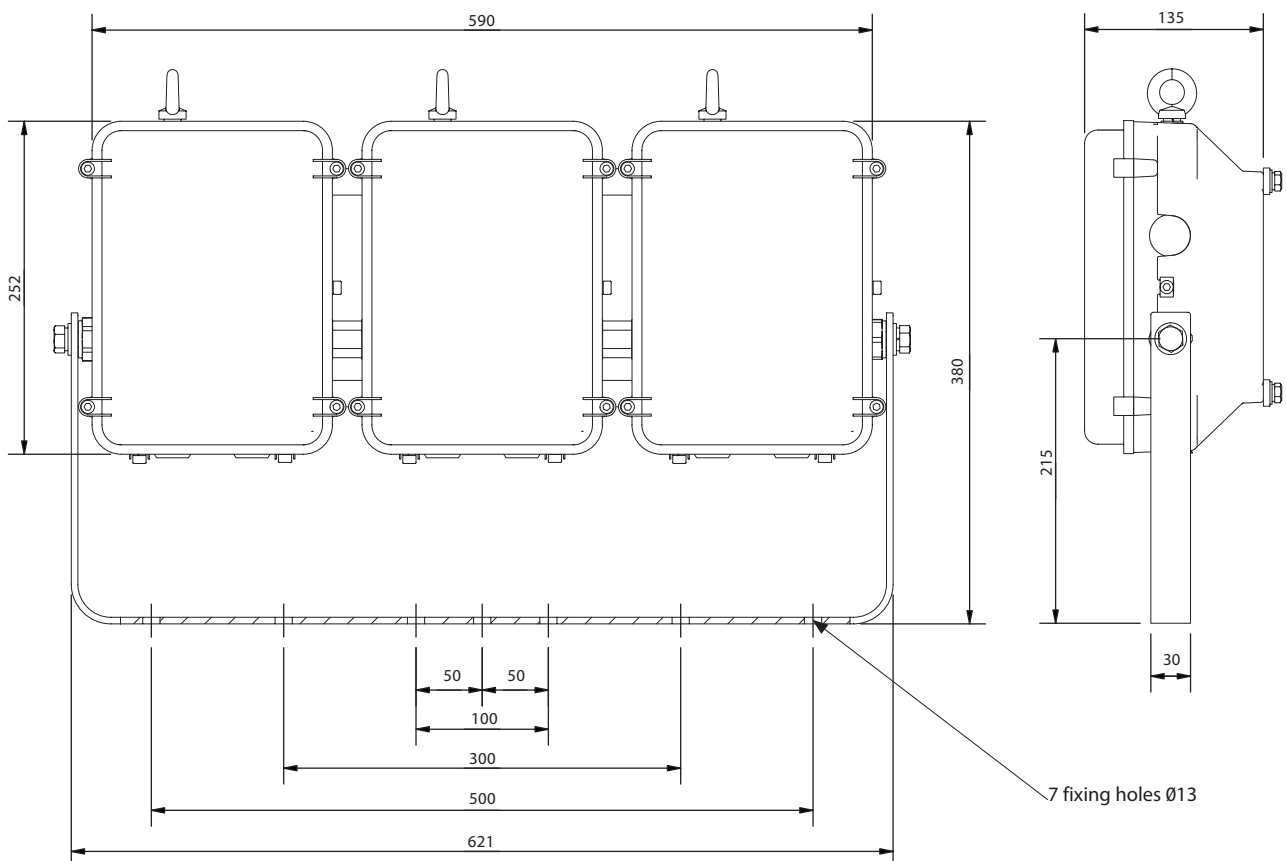
### Single unit (24/48 LEDs)



### Double unit (96 LEDs)



### Triple unit (144 LEDs)



## Quadruple unit (192 LEDs)

