



# HDN106NE

LED Floodlight

The **HDN106NE** is a distinctive Emergency LED luminaire allowing up to three modules interlinked, providing an effective and efficient replacement to traditional battery-backed luminaires.

With a wide ambient range and multiple beam options available, this is a truly global industrial solution for any application where Emergency lighting is required for a period of 90mins or 3hrs.



UK CE

International Approvals

## Mounting Options

Floodlight. Pendant. Bulkhead. High Bay. Pole/Column. Road Lighting.

## Standard Specification

HDN106NE LED Floodlight

Ambient °C	-20 to +55
Enclosure	LM6 Aluminium with epoxy powder finish (RAL 7035) and Polycarbonate diffuser
Entry	2 x M20 cable entries
Termination	4 core 4mm <sup>2</sup> max. conductor with looping
Installation	Stirrup mounting bracket
Control Gear	Electronic Driver
Colour Temperature (CCT)	Refer to Ordering Matrix
Colour Rendering Index (Ra)	>70
Maintenance	M8 Hex Head and M6 SKT Head
Emergency Duration	90mins (75%) or 3hrs (37.5%)
Ingress Protection	IP66/67 to EN 60529
Surge Protection	4kV line to line, 6kV line to earth
Electrical Supply	100-254V AC 50/60Hz

## Features

- Highly **Energy Efficient**
- Modular design** allowing up to three interlinked luminaires, each providing a delivered output > 5500lm
- Instant on** crisp white light output
- Lower power consumption** than HID lamps
- Lightweight** (9kg per Emergency module) lighting solution
- >150,000 maintenance free hours** at 25°C (L70)

HDL106N					
Version <sup>1</sup>	Beam Pattern <sup>2</sup>	Light (CCT)	Cable Entries	Material & Paint	Options
<b>E</b> – EM (48 LEDs) [62W] <b>ES</b> – EM/Std (96 LEDs) [105W] <b>EE</b> – EM/EM (96 LEDs) [122W] <b>SES</b> – Std/EM/Std (144 LEDs) [149W] <b>ESE</b> – EM/Std/EM (144 LEDs) [165W] <b>EEE</b> – EM/EM/EM (144 LEDs) [184W]	<b>N</b> – Narrow (6565lm) <b>M</b> – Medium (5882lm) <b>W</b> – Wide (5624lm) <b>X</b> – Extra Wide (5547lm)	<b>W</b> – Cool White (5000K)	<b>0</b> – M20 <b>5</b> – M25 <b>0BP</b> – M20 Brass Nickel Plated Plugs <b>5BP</b> – M25 Brass Nickel Plated Plugs	<b>04</b> – RAL 7035 (Grey)	<b>FG</b> – Glass front cover <sup>3</sup> <b>BNI</b> – Batteries Not Included <sup>4</sup> <b>RCG</b> – Rapid Connection Gland for single entry <sup>5</sup> <b>RCGL</b> – Rapid Connection Glands for looping <sup>5</sup>

<sup>1</sup>Power consumption provided in square brackets

<sup>2</sup>Delivered outputs based on single module 48LED version

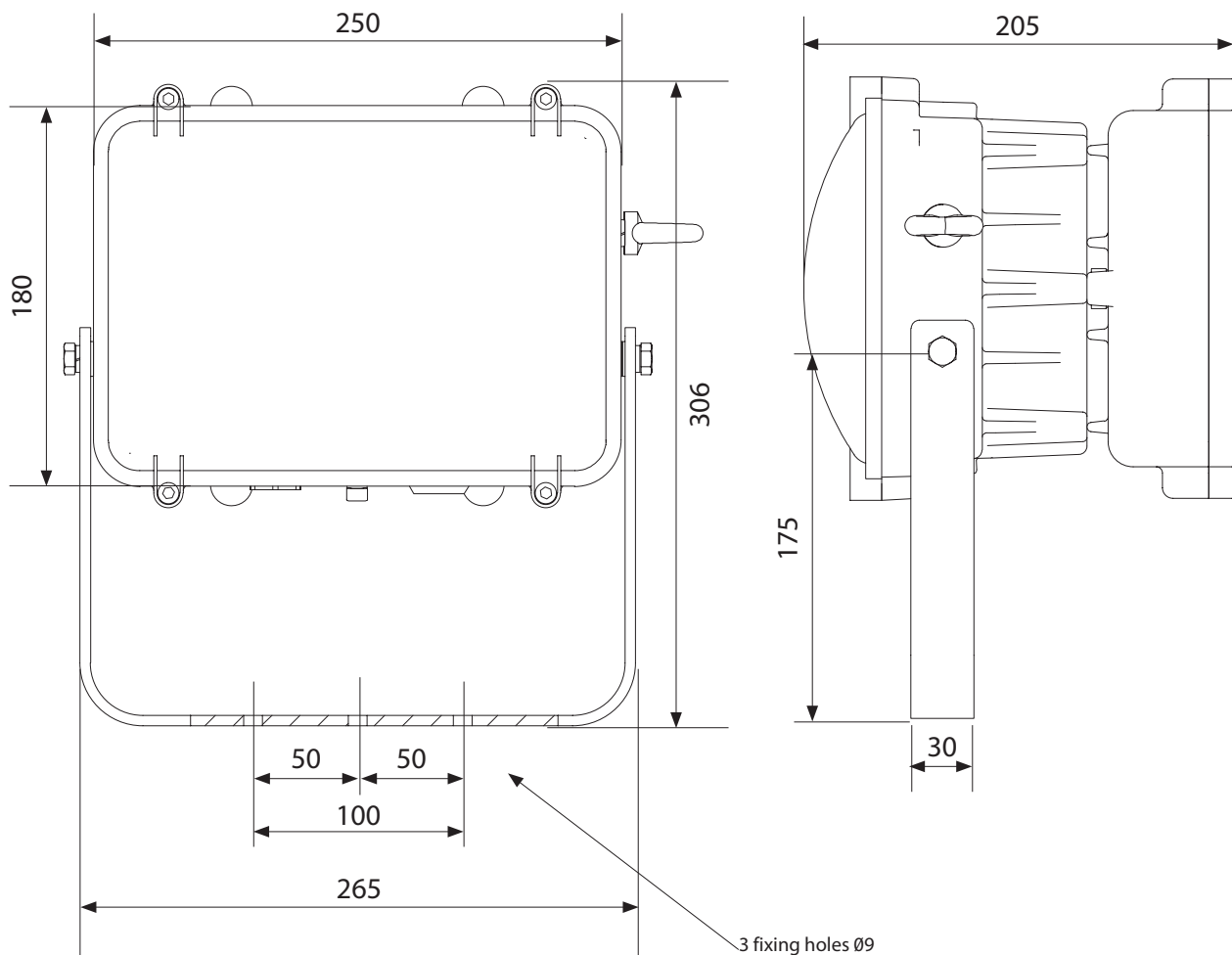
<sup>3</sup>Standard Cover Front Clear Polycarbonate (No Abbreviation required)

<sup>4</sup>Battery assembly HDLAL11131S to be ordered separately when required by site. Qty 1 HDLAL11131S assembly per emergency unit e.g. HDL106NESE\*\*\* requires Qty 2 HDLAL11131S.

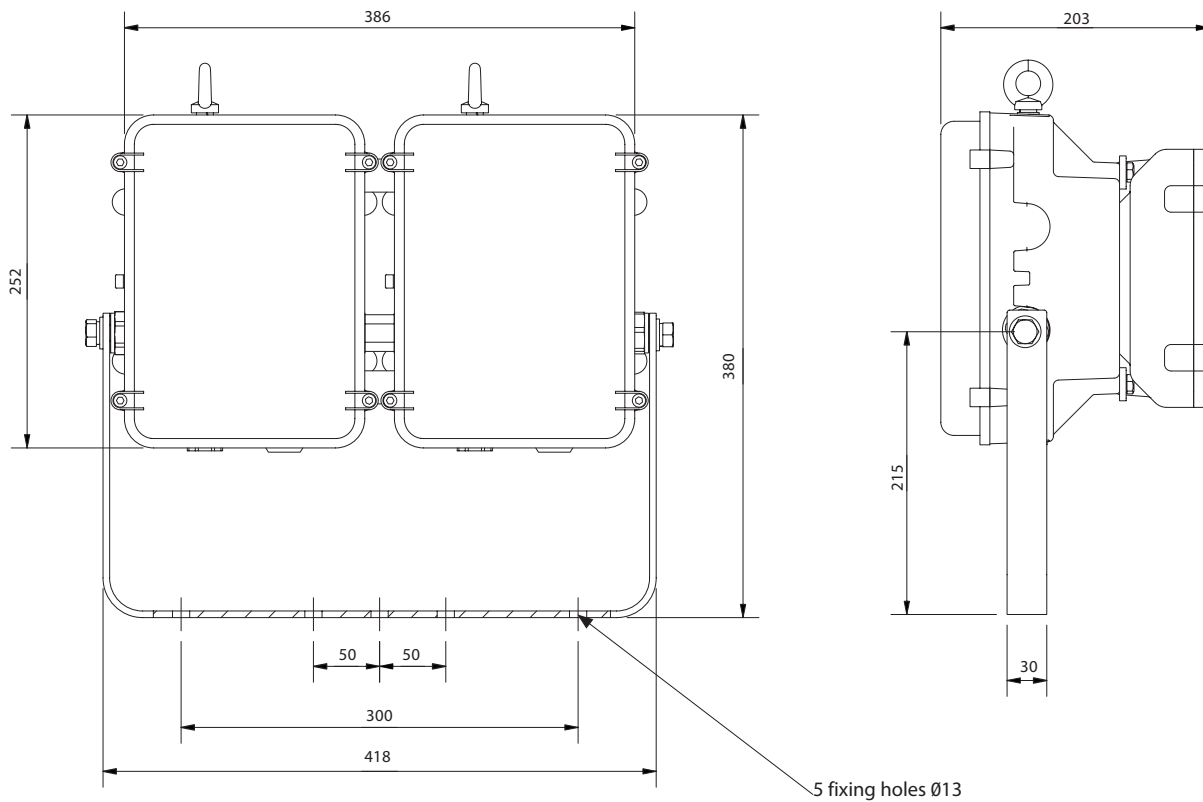
<sup>5</sup>Factory fitted with 4pin Rapid Connection Gland entry only. Purchaser to supply appropriately sized RCG body as determined by site specific cable requirement.

Typical ordering reference: **HDL106NESMW004FG**

### Single unit (48 LEDs)



## Double unit (96 LEDs)



## Triple unit (144 LEDs)

