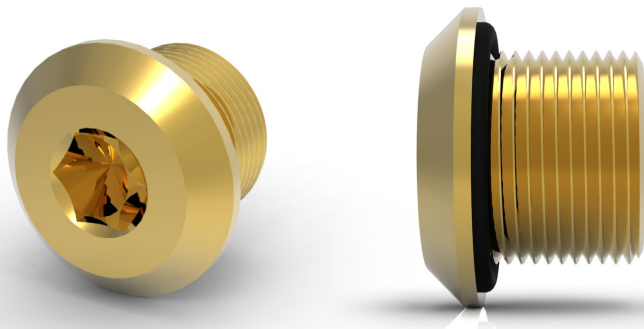




# 487

Domed Head Metallic Stopping Plug



Metallic dome headed stopping plug designed to be installed onto metric threaded or thin walled enclosures. Suitable for use in Increased Safety and Flameproof protection concepts, along with mining applications.

## Technical Data

Ingress Protection	IP66, IP67
Operating Temperature	-60°C to +80°C (with Nitrile O-Ring) -60°C to +160°C (with Silicone O-Ring)
Construction Materials	Manufactured in Brass (Standard), Nickel Plated Brass or 316L Stainless Steel
Threadform	M16 to M130*

\*For M16-M75: Thread Length 15mm as standard; Thread Pitch 1.5mm as standard  
For M80-M130: Thread Length 20mm as standard; Thread Pitch 2mm as standard

### Approvals

Applications	Suitable for Use in Zone 1, Zone 21, Zone 2, Zone 22 and mining applications
Protection Class	Ex II 2GD Ex db eb IIC Gb; Ex tb IIIC Db Ex I M2 Ex db eb I Mb
Construction & Test Standards	IEC/EN 60079-0, IEC/EN 60079-1, IEC/EN 60079-7 and IEC/EN 60079-31
ATEX Certificate No	Baseefa 11ATEX0149X
UKEx Certificate No	BAS21UKEX0058X
IECEX Certificate Number	BAS11.0071X
Marine Approvals	ABS: 17-LD1653734-PDA Bureau Veritas: 43523/B0
Additional Certifications	CCC: 2020312313000329 EAC: No EA3C RU C-GB.HA91.B.00265/21 EQM: 20-11-27224/Q20-11-000979/NB0007 Inmetro: IEx 15.0291X SONCAP: LCOGB049552-0500

### NEC/CEC

NEC Protection Class	Class 1 Zone 1 AEx db eb IIC Gb Zone 21 AEx tb IIIC Db
CEC Protection Class	Ex db eb IIC Gb; Ex tb IIIC Db
c CSA us Certificate	2700364
Construction & Test Standards	CSA C22.2 No 0-10; CSA/UL 60079-0; CSA/UL 60079-1; CSA/UL 60079-7; CSA/UL 60079-31; IEC 60529

## Ordering Information

If brass is required please omit material selection  
Format for ordering is as follows: For silicone O ring add suffix S to optional

Product	Thread Size	Material	Optional
487	M25	NP	S

Part code example - 487M25NPS



Metric Size Selection		
Thread Size	Head Diameter (mm)	Hex Key Size (mm)
M16	24	6
M20	26.5	10
M25	34	
M32	45	
M40	52	
M50	62	
M63	75	
M75	87	
M80	92	17
M90	102	
M100	112	
M110	122	19
M115	127	
M120	132	
M130	142	