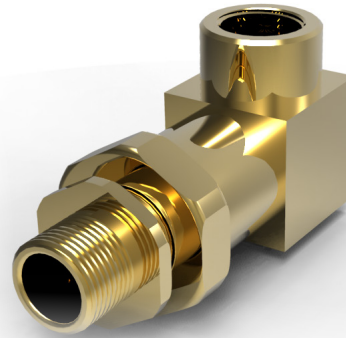
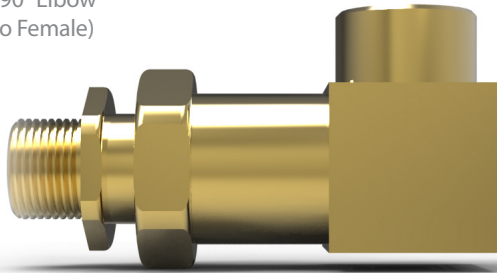




493

Swivel 90° Elbow
(Male to Female)



Metallic swivel elbow with integral O-ring seals.
Suitable for use in Flameproof and Increased Safety protection concepts and mining applications.

Technical Data

Ingress Protection	IP66
Operating Temperature	-60°C to +100°C
Construction Materials	Manufactured in Brass (Standard), Nickel Plated Brass or 316L Stainless Steel
Threadform	M16 to M75* 1/2" NPT to 3" NPT

*Metric Thread Length 15mm as standard; Metric Thread Pitch 1.5mm as standard

Approvals

Applications	Suitable for Use in Zone 1, Zone 21, Zone 2, Zone 22 and Mining Applications
Protection Class	Ex II 2GD Ex db eb IIC Gb; Ex tb IIIC Db Ex I M2 Ex db eb I Mb
Construction & Test Standards	IEC/EN 60079-0, IEC/EN 60079-1, IEC/EN 60079-7 and IEC/EN 60079-31
ATEX Certificate No	Sira 11ATEX1347U
UKEx Certificate No	CSAE21UKEX1054U
IECEX Certificate Number	IECEX SIR 11.0152U
Marine Approvals	ABS: 17-LD1653734-PDA
Additional Certifications	EAC: No EA3C RU C-GB.HA91.B.00265/21
NEC/CEC	
NEC Protection Class	Class 1 Zone 1 AEx d e IIC Gb Zone 21 AEx tb IIIC Db
CEC Protection Class	Ex db eb IIC Gb; Ex tb IIIC Db
c CSA us Certificate	1731876
Construction & Test Standards	CSA C22.2 No. 25, No. 30; No. 45, No. 94, No 18.3; CSA/UL 60079-0; CSA/UL 60079-1; CSA/UL 60079-7; CSA/UL 60079-31; UL514B

Size Selection

Male Thread Size	Female Thread Size	Typical A/F (mm)	Typical A/C (mm)
M16	M16	36	39.5
M20	M20	36	39.5
M25	M25	55	60.6
M32	M32	55	60.6
M40	M40	80	88
M50	M50	80	88
M63	M63	95	104
M75	M75	95	104

Ordering Information

If brass is required please omit material selection
Format for ordering is as follows:

Product	Male Thread Size	Female Thread Size	Material
493	M25	1.0	NP

Part code example - 493M251.0NP
Please note all NPT entries should be state as a decimal

