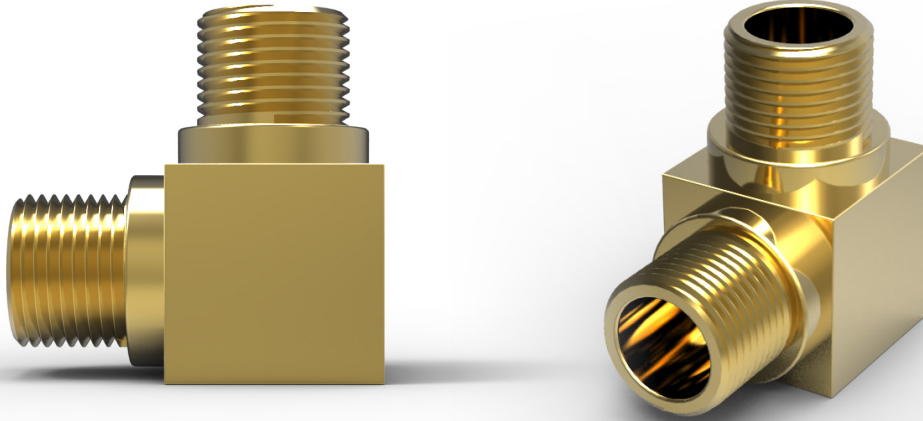




# 495

90° Fixed Elbow  
(Male to Male)



Fixed 90 degree metallic elbow. Suitable for use in Flameproof and Increased Safety protection concepts.

## Technical Data

Ingress Protection	IP66
Operating Temperature	-60°C to +200°C
Construction Materials	Manufactured in Brass (Standard), Nickel Plated Brass or 316L Stainless Steel
Threadform	M20 to M75* 1/2" NPT to 2" NPT

\*Metric Thread Length 15mm as standard; Metric Thread Pitch 1.5mm as standard

## Approvals

Applications	Suitable for Use in Zone 1, Zone 21, Zone 2, Zone 22
Protection Class	Ex II 2GD Ex db eb IIC Gb; Ex tb IIC Db
Construction & Test Standards	IEC/EN 60079-0, IEC/EN 60079-1, IEC/EN 60079-7 and IEC/EN 60079-31
ATEX Certificate No	Baseefa14ATEX0014U
UKEx Certificate No	BAS21UKEX0055U
IECEX Certificate Number	BAS14.0002U
Additional Certifications	EAC: No EA3C RU C-GB.HA91.B.00265/21 EQM: 20-11-27224/Q20-11-000979/NB0007 Inmetro: IEx15.0205U

## Size Selection

Male Thread Size	Female Thread Size	Typical Block Size
M20	M20	27
M25	M25	35
M32	M32	42
M40	M40	50
M50	M50	60
M63	M63	78
M75	M75	90

## Ordering Information

If brass is required please omit material selection  
Format for ordering is as follows:

Product	Male Thread Size	Male Thread Size	Material
495	M25	1.0	NP

Part code example - 495M251.0NP

Please note all NPT entries should be state as a decimal