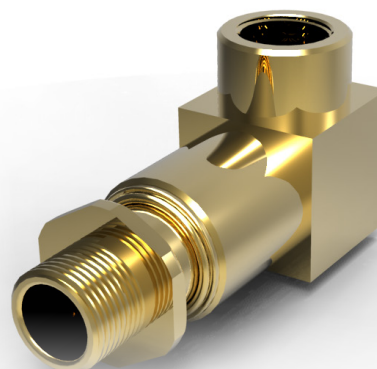




# 493

Swivel 90° Elbow  
(Male to Female)



Metallic swivel elbow with integral O-ring seals.

Suitable for use in Flameproof and Increased Safety protection concepts and mining applications.

## Technical Data

<b>Ingress Protection</b>	IP66
<b>Operating Temperature</b>	-60°C to +100°C
<b>Construction Materials</b>	Manufactured in Brass (Standard), Nickel Plated Brass or 316L Stainless Steel
<b>Threadform</b>	M16 to M75* 1/2" NPT to 3" NPT

\*Metric Thread Length 15mm as standard; Metric Thread Pitch 1.5mm as standard

### Approvals

<b>Applications</b>	Suitable for Use in Zone 1, Zone 21, Zone 2, Zone 22 and Mining Applications
<b>Protection Class</b>	Ex II 2GD Ex db eb IIC Gb; Ex tb IIIC Db Ex I M2 Ex db eb I Mb
<b>Construction &amp; Test Standards</b>	IEC/EN 60079-0, IEC/EN 60079-1, IEC/EN 60079-7 and IEC/EN 60079-31
<b>ATEX Certificate No</b>	Sira 11ATEX1347U
<b>UKEx Certificate No</b>	CSAE21UKEX1054U
<b>IECEX Certificate Number</b>	IECEX SIR 11.0152U
<b>Marine Approvals</b>	ABS: 17-LD1653734-PDA
<b>Additional Certifications</b>	EAC: No EA3C RU C-GB.HA91.B.00265/21

### NEC/CEC

<b>NEC Protection Class</b>	Class 1 Zone 1 AEx d e IIC Gb Zone 21 AEx tb IIIC Db
<b>CEC Protection Class</b>	Ex db eb IIC Gb; Ex tb IIIC Db
<b>c CSA us Certificate</b>	1731876
<b>Construction &amp; Test Standards</b>	CSA C22.2 No. 25, No. 30; No. 45, No. 94, No 18.3; CSA/UL 60079-0; CSA/UL 60079-1; CSA/UL 60079-7; CSA/UL 60079-31; UL514B

## Size Selection

Male Thread Size	Female Thread Size	Typical A/F (mm)	Typical A/C (mm)
M16	M16	36	39.5
M20	M20	36	39.5
M25	M25	55	60.6
M32	M32	55	60.6
M40	M40	80	88
M50	M50	80	88
M63	M63	95	104
M75	M75	95	104

## Ordering Information

If brass is required please omit material selection  
Format for ordering is as follows:

Product	Male Thread Size	Female Thread Size	Material
493	M25	1.0	NP

Part code example - 493M251.ONP

Please note all NPT entries should be state as a decimal  
More options may be available on request.

Product design and specifications are subject to change without notice. Please check the Hawke website for latest specifications

Contact Hubbell T: +44 (0) 141 882 5555 E: getintouchuk@hubbell.com  
www.hubbell.com/hawke



## Thread Combinations

The following male and female thread combination for the Type 493 (90 Degrees Elbow) are permitted as indicated by "X"

Male Thread		Female Thread							
		M16 ½"	M20 ¾"	M25 1"	M32 1 ¼"	M40 1 ½"	M50 2"	M63 2 ½"	M75 3"
M16	½"	X	X						
M20	¾"	X	X	X					
M25	1"		X	X	X				
M32	1 ¼"			X	X	X			
M40	1 ½"				X	X	X		
M50	2"					X	X	X	
M63	2 ½"						X	X	X
M75	3"							X	X



A Hubbell brand