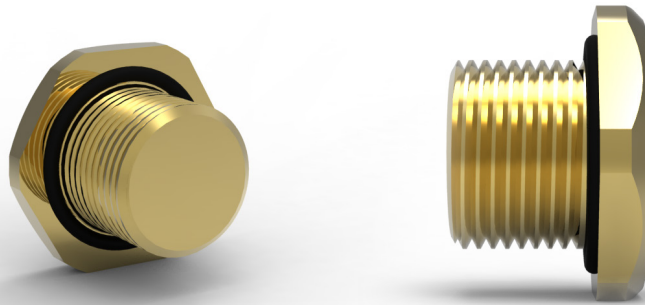




390

Hexagon Head Metallic Stopping Plug



Metallic hexagon headed stopping plug designed to be installed onto metric threaded or thin walled enclosures.
Suitable for use in Increased Safety protection concepts and for mining applications.

Technical Data

Ingress Protection	IP66, IP67
Operating Temperature	-60°C to +80°C (with Nitrile O-Ring) -60°C to +160°C (with Silicone O-Ring)
Construction Materials	Manufactured in Brass (Standard), Nickel Plated Brass or 316L Stainless Steel
Threadform	M16 to M130* 1/2" NPT to 6" NPT
<i>*For M16-M75: Thread Length 15mm as standard; Thread Pitch 1.5mm as standard For M80-M130: Thread Length 20mm as standard; Thread Pitch 2mm as standard ** NPT threadforms may only be used with thinwalled enclosures and fitted with an NPSM locknut</i>	

Approvals

Applications	Suitable for Use in Zone 1, Zone 21, Zone 2, Zone 22 and mining applications
Protection Class	Ex II 2GD Ex eb IIC Gb; Ex tb IIIC Db Ex I M2 Ex eb I Mb
Construction & Test Standards	IEC/EN 60079-0, IEC/EN 60079-7 and IEC/EN 60079-31
ATEX Certificate No	Baseefa 11ATEX0157X
UKEx Certificate No	BAS21UKEX0052X
IECEx Certificate Number	BAS11.0079X
Marine Approvals	ABS: 17-LD1653734-PDA Bureau Veritas: 43523/BO
Additional Certifications	EAC: No EA3C RU C-GB.HA91.B.00265/21 EQM: 20-11-27224/Q20-11-000979/NB0007 Inmetro: IEx15.0291X SONCAP: LCOGB049552-0500

NEC/CEC

NEC Protection Class	Class 1 Zone 1 AEx eb IIC Gb Zone 21 AEx tb IIIC Db
CEC Protection Class	Ex eb IIC Gb; Ex tb IIIC Db
c CSA us Certificate	2700364
Construction & Test Standards	CSA C22.2 No 0-10; CSA/UL 60079-0; CSA/UL 60079-7; CSA/UL 60079-31; IEC 60529

Ordering Information

If brass is required please omit material selection
Format for ordering is as follows: For silicone O ring add suffix S to optional

Product	Thread Size	Material	Optional
390	M25	NP	S

Part code example - 390M25NPS

Please note all NPT entries should be state as a decimal

Metric Size Selection		
Thread Size	Across Flats (mm)	Across Corners (mm)
M16	24	26.5
M20	30	32.5
M25	36	39.5
M32	46	50.5
M40	55	60.6
M50	65	70.8
M63	80	88
M75	95	104
M80	95	104
M90	106.4	115
M100	115	130
M110	127	142
M115	127	142
M120	140	154
M130	140	154

NPT Size Selection		
Thread Size	Across Flats (mm)	Across Corners (mm)
½"	36	39.5
¾"	46	50.5
1"	46	50.5
1¼"	55	60.6
1½"	65	70.8
2"	80	88
2½"	95	104
3"	106.4	115
3½"	115	130
4"	127	142

