



TOUGHMATE

CONNECTOR



The ToughMate connector has been developed to be used on underground and overground rail networks, commercial and public buildings where equipment needs to withstand the harshest of environments.

Tested to the latest Industrial BS EN 61984 and LVD 2014/35/ EU our connector will maintain its electrical and structural integrity during the toughest conditions. The product is designed to be used in emergency lighting circuits; fire alarms; voice alarms; shutdownsystems and fire detection.

Technical Data

Construction and Test Standards:	BS EN 61984, GPSD (2001/95/EC)
Ingress Protection	IP66
Material	Nickel Plated Brass or Stainless Steel 316
Operating Temperature	Range: -25°C to +70°C
Clamping Arrangement	Single compression seal
Earth	Electrical continuity using earth pin and body connection
Cable Type	Unarmoured cable
Number of Cores	4 + Earth Dali ready
Core Size	Up to 6mm ²
Current Range	16 Amps
Voltage Range	250 V
Assembly Instructions	A1 504
Max No. of make & break operations (EN61984): on and off load	≥500

Ordering Options

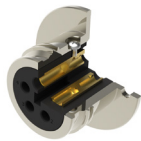
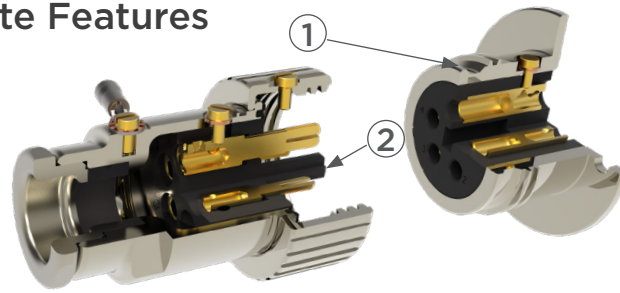
Manufacture	Hawke	H
Type	ToughMate	TM
Material	Nickel Plated Brass	N
	Stainless Steel	S
Connector Style <i>The CP is always supplied with pin contacts</i>	Connector Plug	CP
	Bulkhead Receptacle	BR
	Besa Box Receptacle	BB

* For best practice please ensure that the socket side is energised only

Sample Order Code

Manufacture/Type/Material etc	H/TM/S/CP = Hawke, ToughMate, Stainless Steel, Connector Plug
-------------------------------	---

ToughMate Features



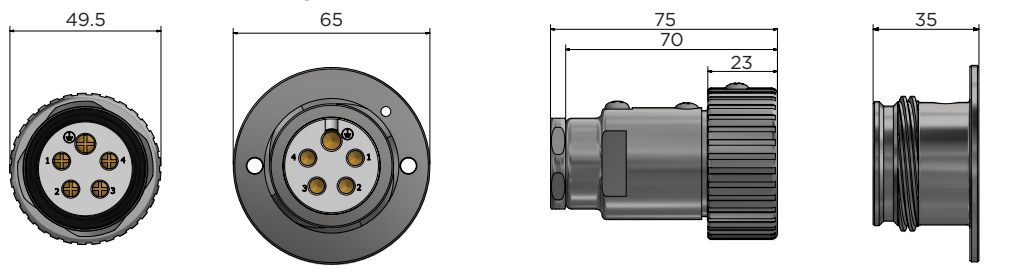
1. Quick Connect via a 4 start thread Earth and Key location screw.



2. Custom peg design to ensure correct mating locations every time.

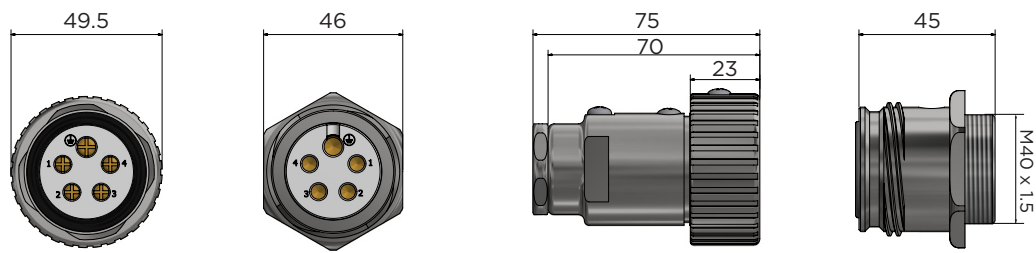
Besa Box Receptacle to Connector Plug

For Besa Box Mounting



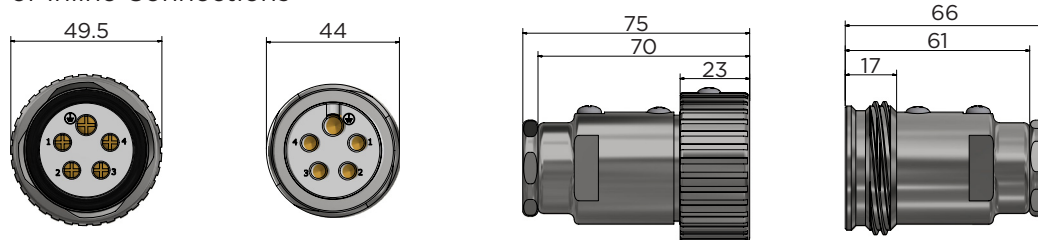
Bulkhead Receptacle to Connector Plug

For Enclosure/Equipment Mounting



Connector Receptacle to Connector Plug

For Inline Connections



Connector plugs and connector receptacles accept a cable OD of 10mm to 14mm.
For any cable OD outside of these sizes, please contact Hawke Sales for more details.
All bulkhead receptacles are supplied with an M40 entry.