

8000 PL Series

60 kV Module Portable DC Hipot Testers

■ **The 8000PL Series** DC Hipot Testers offer a 60 to 300 kV range in a convenient cascade design. These systems are air insulated, with each module individually capable of producing 60 kV at 16 mA. The standard power rating is 2 kW. Low leakage measurement, even with fluctuating line voltage, is possible with the 1% line regulator. The design also offers reversible polarity.

This modular (expandable) construction favors the use of these portable testers in situations formerly requiring large mobile units. For example, when field-testing, each technician can be equipped with one controller and as many modules as routine tests require. Then, for any non-routine higher voltage tests, additional modules may be assembled at the test site. For example, a 240 kV test requires one controller and four modules. Each unit consists of a control case and one or several 60 kV modules up to the required voltage. For expansion above three modules, a HV expansion kit is required. This kit contains an anti-corona toroid rated for up to 300 kV, plus base extension legs and guy straps for support. The lightweight fiberglass control case includes all operating controls and meters, plus storage area for the base grounding probe, output resistor, and interconnecting cables.



FEATURES

- ☑ **Expandable** from 60 kV to 300 kV
- ☑ **Rugged, portable and modular** construction
- ☑ **High current** output for testing large loads
- ☑ **Reversible polarity**
- ☑ **Ripple <0.2% per mA**
- ☑ Analog kilovolt and current meters
- ☑ **Zero start interlock** and external interlock provisions for safety during operation
- ☑ **Anti-corona** toroid
- ☑ **Compact control** unit allows remote positioning ideal for field use
- ☑ **Momentary current reversal switch**
- ☑ **Optional high voltage shorting solenoid**

BENEFITS

Ideal for field testing – lightweight, compact, and rugged make it suitable for field testing

Quick and Easy - a modular system limits the setup time and user-friendly controls make it simple to use

Modular Construction - bring only the number of modules necessary for the required voltage

Easily Transportable - Air-insulated modules make it light weight and simple to transport in a van or pickup truck

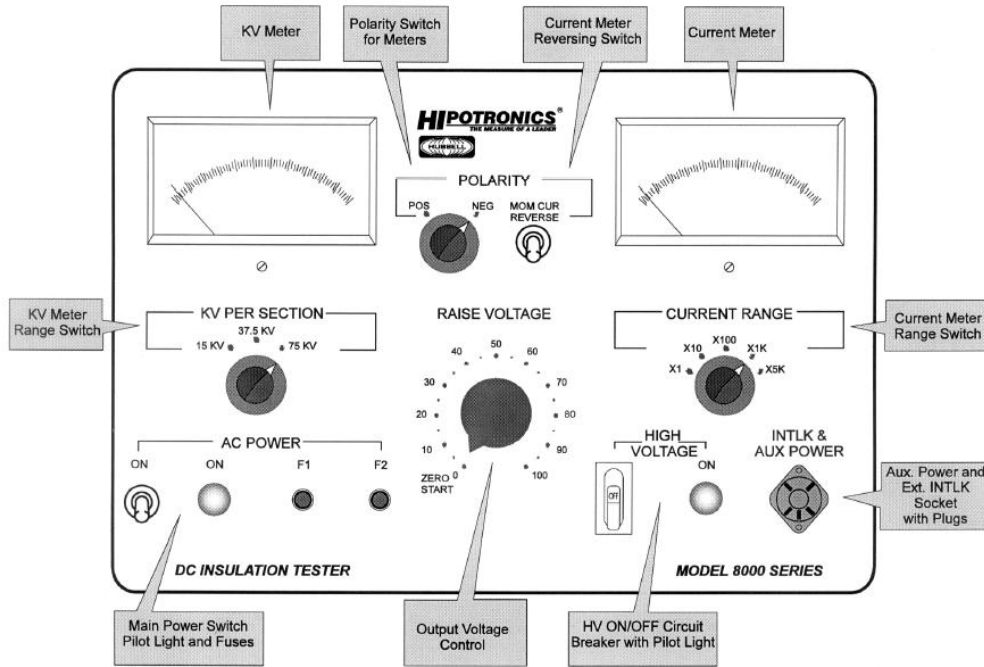
Accurate Leakage Current Measurements -while guard circuit eliminates stray leakage currents

APPLICATIONS

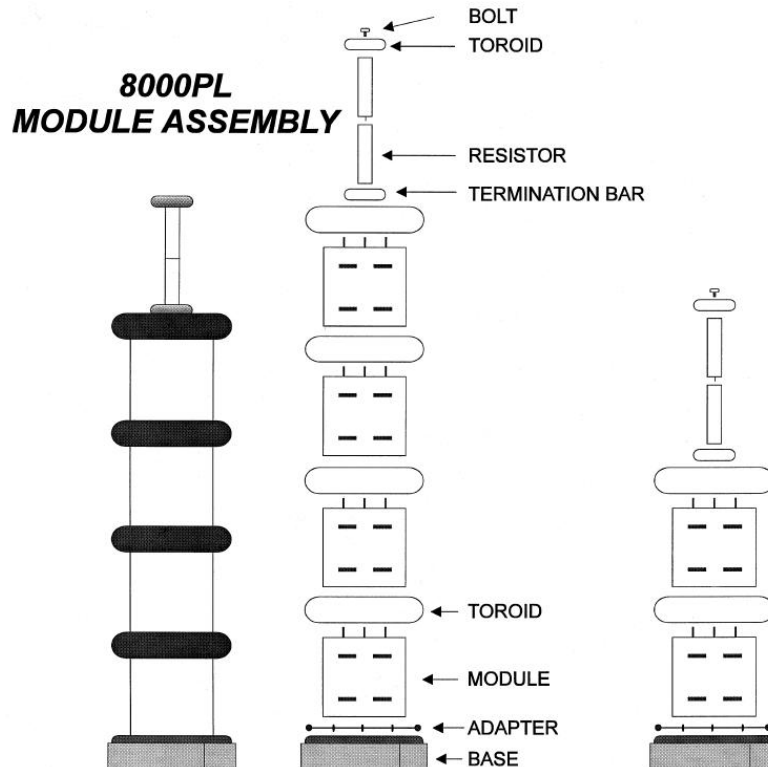
DC Hipot testing of:

- **Cable**
- **Electrical switchgear**
- **Motors**
- **Generators**
- **Other electrical apparatus**

CONTROL PANEL



MODULE ASSEMBLY



TECHNICAL SPECIFICATIONS

General

| Model Number | 8060PL | 8120PL | 8180PL | 8240PL | 8300PL |
|---------------------------|---|--------|--------|--------|--------|
| Input Voltage & Frequency | * In the model number, designate 'A' for 120V/60Hz input or 'B' for 230V/50Hz input | | | | |
| Number of Modules | 1 | 2 | 3 | 4 | 5 |
| Output Voltage (kV DC) | 60 | 120 | 180 | 240 | 300 |
| Output Current (mA) | 16 | 8 | 5.5 | 4.1 | 3.3 |
| Duty Cycle | Continuous | | | | |
| Output Polarity | Reversible | | | | |
| Output Ripple | < 0.2% per mA | | | | |
| Metering | ± 2% Full Scale Accuracy | | | | |

Weights and Dimensions (W x H x D, net weight, ship weight)

| | | | |
|------------|--|----------------|----------------|
| Controller | 22" x 22" x 12" (560 x 560 x 310 mm) | 69 lbs (31 kg) | 79 lbs (36 kg) |
| Module | 9¼" x 16¼" x 10½" (240 x 410 x 270 mm) | 58 lbs (26 kg) | 68 lbs (31 kg) |

SCOPE OF SUPPLY

- Qty. X 8KPL-MOD 60 kV Module (quantity depends upon model number)
 - Qty. 1 8KPL-CONT Controller
 - Qty. 1 DA13-280 Ground stick, 120 kV max
 - Qty. 1 8KPL-EXT-HV HV expansion Kit#
 - Qty. 1 Epoxy Resistor Qty. 1 Input Line Cord, 10 ft (3 m)
 - Qty. 2 Ground Cable, 15 feet (4.6 m)
 - Qty. 1 Interconnection Cable, 30 feet (9.1 m)
 - Qty. 1 Calibration Certificate
 - Qty. 1 User's Manual
- # Supplied ONLY with 8180PL, 8240PL and 8300PL

ORDERING INFORMATION

System

| | |
|-------------------------|-----------------|
| 60 kV, 16 mA DC Hipot | 8060PL-* |
| 120 kV, 8 mA DC Hipot | 8120PL-* |
| 180 kV, 5.5 mA DC Hipot | 8180PL-* |
| 240 kV, 4.1 mA DC Hipot | 8240PL-* |
| 300 kV, 3.1 mA DC Hipot | 8300PL-* |

Accessories

| | |
|------------------------------------|--------------------|
| DC Hipot Controller, 8000PL Series | 8KPL-CONT |
| 60 kV Module Kit | 8KPL-MOD |
| High Voltage Expansion Kit | 8KPL-EXT-HV |
| Ground stick, 120 kV max. | DA13-280 |
| Shorting Switch, 175 kV - 1 MV | 8175-SS |
| Line Regulator, 1%, 2 kW | 8KPL-LR2 |