

# DC Power Packs

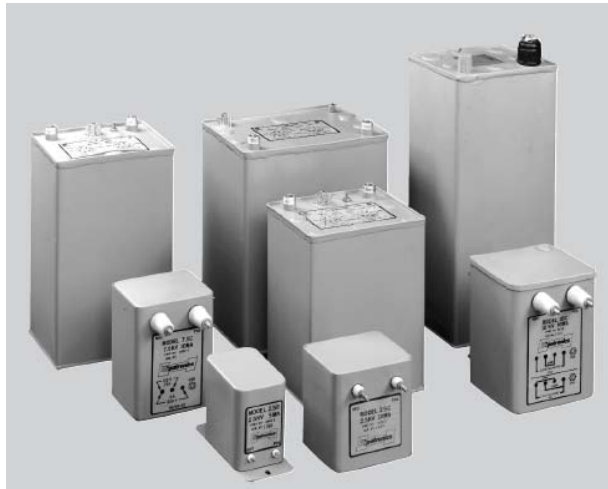
## High Voltage DC Power Supplies

---

■ **HIPOTRONICS'** DC Power Packs are complete high voltage sections designed for OEM use or any application requiring high voltage at low current levels. Controls, metering and circuit protection such as circuit breakers or fuses are not included. A built-in meter multiplier resistor is supplied in the units rated 30kV and higher where an external voltage divider might cause problems. All power packs are hermetically sealed in oil or epoxy filled meta cans and all feature solid-state rectifiers.

These units are designed to supply 5 to 10mA at high voltage on a continuous basis. They are suitable for use in X-ray systems, laser systems, low power precipitators and as general-purpose high voltage DC sources. All units have surge limiting resistors in the output. However, for applications requiring frequent "slap-on", small series impedance should be used in the input. Consult our sales department for these and other special applications.

### 2.5kV to 100kV Power Packs



---

## FEATURES

- ☑ **Compact Size**
- ☑ **Metal Can Construction**
- ☑ **Surge Limited Resistors** in output
- ☑ **Continuous Duty Rated** at maximum rating
- ☑ **115 or 220 V 50/60Hz** selectable input
- ☑ **Bleed Resistors Built** into output
- ☑ **Epoxy or Oil Insulated** in a hermetically sealed unit
- ☑ **Reversible Polarity**

---

## BENEFITS

- Compact** – saves valuable space in product package
- Rugged Design** – suited for use in harsh environments
- Built in Bleeder Resistors** –doesn't hold charge when power is turned off
- Hermetically Sealed** – Moisture can't enter high voltage tank

---

## APPLICATIONS

- X-ray Systems
- Laser Systems
- Precipitators
- Medical Equipment
- General Purpose HV Source

## TECHNICAL SPECIFICATIONS

General	PP205-5	PP5-5	PP705-10	PP10-5	PP10-10	PP15-10
Input Voltage	120V, 60Hz/220V, 50Hz					
Input Current	115V .5A 220V .25A	115V 1A 220V .5A	115V .75A 220V .4A	115V 1.5A 220V 1A	115V 2A 220V 1A	115V 2A 220V 1A
Output Voltage	2.5kV	5kV	7.5kV	10kV		15kV
Output Current	5mA		10mA	5mA	10mA	
Regulation	Less than 15%					
Ripple	0.5% per mA of output current					
Insulation	Epoxy				Oil	
Internal Shorting	Bleed Resistors					
Polarity	Reversible					
Dimensions	Referenced Below					
Weights	3.25 lb. 1.5 kg	6 lb. 2.7 kg	8 lb. 3.6 kg	7 lb. 3.2 kg	11.8 lb. 5.4 kg	11.8 lb. 5.4 kg

General	PP20-5	PP30-5	PP30-10	PP50-5	PP100-5*	PP100-10
Input Voltage	120V, 60Hz/220V, 50Hz					
Input Current	115V 2A 220V 2A	115V 2A 220V 1A	115V 3A 220V 1.5A	115V 3A 220V 1.6A	*115V 6A Only	115V 12A 220V 6A
Output Voltage	20kV	30kV	30kV	50kV	100kV	100kV
Output Current	5mA		10mA	5mA	5mA	10mA
Regulation	Less than 15%					
Ripple	0.5% per mA of output current					
Insulation	Oil					
Internal Shorting	Bleed Resistors					
Polarity	Reversible					
Dimensions	Referenced Below					
Weights	11.8 lb. 5.4 kg	15 lb. 6.8 kg	17.8 lb. 8.1 kg	30 lb. 13.6 kg	80 lb. 36 kg	150 lb. 68 kg

## DIMENSIONS

<b>PP205-5</b>	3.5625in.H x 2.75in.W x 5.5in.D (90mmH x 70mmW x 140mmD)
<b>PP5-5</b>	4.375in.H x 4.8125in.W x 4.25in.D (111mmH x 122mmW x 109mmD)
<b>PP705-10</b>	5.9375in.H x 5.375in.W x 4.75in.D (135mmH x 137mmW x 121mmD)
<b>PP10-5</b>	5.937in.H x 5.375in.W x 4.75in.D (135mmH x 137mmW x 121mmD)
<b>PP15-10</b>	6.1666in.H x 6.125in.W x 5.6875in.D (150mmH x 158mmW x 143mmD)
<b>PP20-5</b>	6.1666in.H x 6.125in.W x 5.6875in.D (150mmH x 158mmW x 143mmD)
<b>PP30-5</b>	9.5in.H x 5in.W x 6in.D (243mmH x 127mmW x 153mmD)
<b>PP30-10</b>	11.5in.H x 5in.W x 6in.D (293mmH x 127mmW x 153mmD)
<b>PP50-5</b>	11.5in.H x 6in.W x 6in.D (295mmH x 153mmW x 153mmD)
<b>PP100-5</b>	16in.H x 11.5W x 9in.D (406mmH x 292mmW x 229mmD)
<b>PP100-10</b>	20.5in.H x 15in.W x 10in.D (512mmH x 381mmW x 254mmD)