

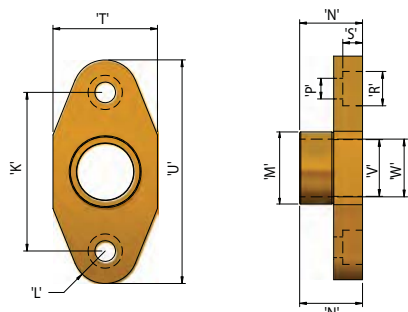
Adaptor Flange Type: 483

102

Cable Glands Mining

Flameproof Exd & Increased Safety Exe

Dual Certified ATEX / IECEx



SELECTION TABLE

Size Ref.	Equipment Entry Hole Size	
	Max	Min
O	25.70	25.45
A	25.70	25.45
B	32.05	31.80
C	38.40	38.15
C2	51.10	50.85
D	63.80	63.55
E	76.50	76.25
F	76.50	76.25

All dimensions in millimetres.

Application

- Mining.
- See technical section for installation rules and regulations

Features

- To allow metric threaded Group 1 cable gland types: 653/UNIV, 653/T, 653, 623, 453/UNIV, 453/T, 453/RAC and 453 to be used in size up spigot entries.
- Manufactured in Brass (standard), Nickel Plated Brass or 316 Stainless Steel.

Technical Data

- Flameproof Exd Exd I M2 .
- Certificate No's: Baseefa08ATEX0333U and IECEx BAS 08.0013U
- Suitable for use in Mines.
- Construction and Test Standards: IEC/EN 60079-0 and IEC/EN 60079-1.
- Operating Temperature Range: -60°C to $+80^{\circ}\text{C}$.
- Assembly Instruction Sheet: AI 344.
- Alternative certification options available:



SELECTION TABLE

Size Ref.	Flange Dimensions											Casting Size
	K	L	M	N	P	R	S	T	U	V	W	
O	57.1	12.7	25.40	26.1	6.7	11.1	7.0	36	82.5	M20	20.0	B
A	57.1	12.7	25.40	26.1	6.7	11.1	7.0	36	82.5	M20	20.0	B
B	69.8	14.3	31.75	27.7	9.1	15.1	8.7	46	98.4	M25	25.4	C
C	82.5	14.3	38.10	27.7	9.1	15.1	8.7	55	111.1	M32	32.0	C2
C2	95.2	17.5	50.80	29.3	11.1	18.1	10.5	65	130.2	M40	40.0	D
D	114.3	17.5	63.50	29.3	11.1	18.1	10.5	80	149.3	M50	50.7	E
E	127.0	17.5	76.20	32.5	11.1	20.5	13.5	95	162.0	M63	63.4	F
F	127.0	17.5	76.20	48.0	11.1	20.5	13.5	95	162.0	M75	66.0	F

All dimensions in millimetres.

Ordering Information

Format for ordering is as follows:

Adaptor Flange Type	Size	Adaptor Flange Type	Size
483	C	483	C

A 484 Flanged Adaptor option is also available which allows metric threaded Group 1 cable gland types 653/UNIV, 653/T, 653, 623, 453/UNIV, 453/T, 453/RAC and 453 to be fitted into a size for size spigot entry.