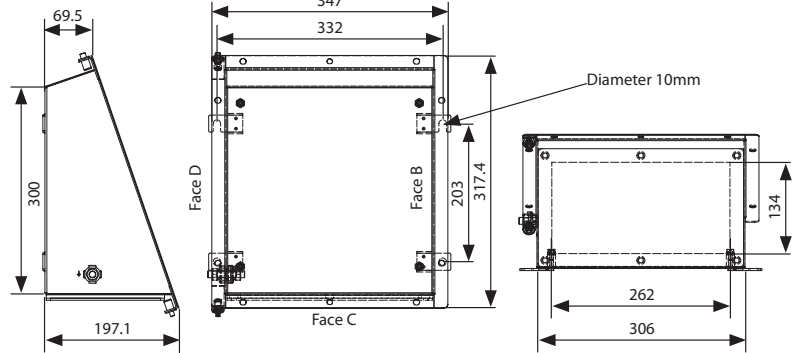
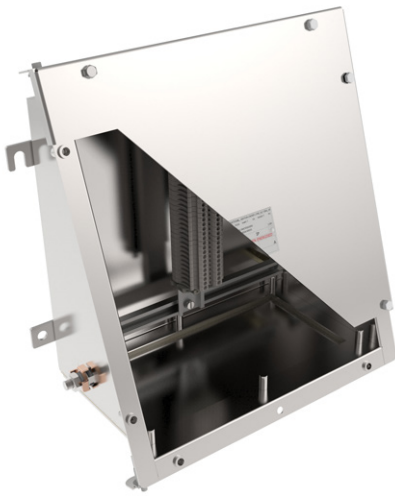




# EA 303020

Increased Safety Exe Dual Certified ATEX / IECEx

11



Selection Table

Thread Size	M16	M20	M25	M32	M40	M50	M63	M75
Face B	26	16	11	7	5	3	2	1
Face C (Gland Plate)	35	23	15	9	7	4	-	-
Face C (no Gland Plate)	45	28	18	15	8	6	3	2
Face D	22	13	8	5	3	2	1	1

Terminal Capacity

Terminal Type	Conductor Size (mm <sup>2</sup> )		Max. Volts	Rail Orientation	Max. Physical Terminal Content			Reduced Terminal Content at Max Amps	
	Min.	Max.			Terminal Qty.	Rail Qty	Amps	Terminal Qty.	Amps
WDU 2.5	0.5	2.5	550	V	82	2	3	4	17
				H	90		3		
UT 2.5	0.5	2.5	690	V	80	2	4	7	15
				H	88		4		
WDU 4	0.5	4	690	V	68	2	5	3	22
				H	76		4		
UT 4	0.5	4	690	V	66	2	6	6	20
				H	74		5		
WDU 6	0.5	6	550	V	52	2	7	3	29
				H	58		6		
UT6	0.5	6	690	V	50	2	9	5	28
				H	56		8		
WDU 10	1.5	10	550	V	42	2	10	2	40
				H	46		9		
UT 10	1.5	10	690	V	40	2	12	4	39
				H	44		12		
WDU 16	1.5	16	690	V	34	2	13	2	53
				H	38		13		
UT 16	1.5	16	690	V	32	2	18	3	53
				H	36		17		
WDU 35	2.5	35	690	V	26	2	22	1	87
				H	28		21		
UT 35	2.5	35	690	V	26	2	26	3	70
				H	28		25		

\* Max terminals are split across the quantity of terminal rails

For all enquiries please contact Steve Parkin on T: +44 (0)161 830 6617 M: +44 (0)7540501332 E: sparkin@hubbell.com