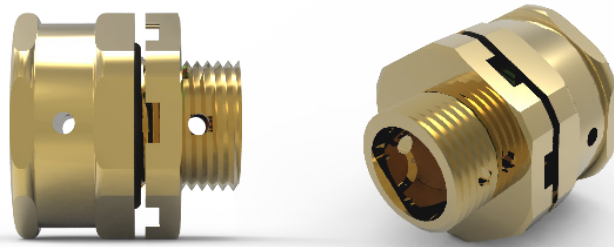




389

Metallic Breather Drain



Metallic breather drain designed to be installed onto metric threaded or thinwalled enclosures. Suitable for use in Increased Safety protection concepts and mining applications.

Technical Data	
Ingress Protection	IP66
Operating Temperature	-60°C to +80°C (with Nitrile O-Ring) -60°C to +160°C (with Silicone O-Ring)
Construction Materials	Manufactured in Brass (Standard), Nickel Plated Brass or 316L Stainless Steel
Threadform	M20, M25*

**Metric Thread Length 15mm as standard; Metric Thread Pitch 1.5mm as standard*

Approvals	
Applications	Suitable for Use in Zone 1, Zone 21, Zone 2, Zone 22
Protection Class	Ex II 2GD Ex eb IIC Gb; Ex tb IIIC Db Ex I M2 Ex eb I Mb
Construction & Test Standards	IEC/EN 60079-0, IEC/EN 60079-7 and IEC/EN 60079-31
ATEX Certificate No	Baseefa 11ATEX0153X
UKEx Certificate No	BAS21UKEX0043X
IECEx Certificate Number	BAS11.0075X
Marine Approvals	ABS: 17-LD1653734-PDA BV: 43523/B0
Additional Certifications	EAC: No EA3C RU C-GB.HA91.B.00265/21 EQM: 20-11-27224/Q20-11-000979/NB0007 Inmetro: IEx 15.0208X
NEC/CEC	
NEC Protection Class	Class 1 Zone 1 AEx eb IIC Gb Zone 21 AEx tb IIIC Db
CEC Protection Class	Ex eb IIC Gb; Ex tb IIIC Db
c CSA us Certificate	2700364
Construction & Test Standards	CSA C22.2 No 0-10; CSA/UL 60079-0, CSA/UL 60079-7, CSA/UL 60079-31, IEC 60529

Ordering Information			
Product	Thread Size	Material	Finish
389	M20	Brass	NP