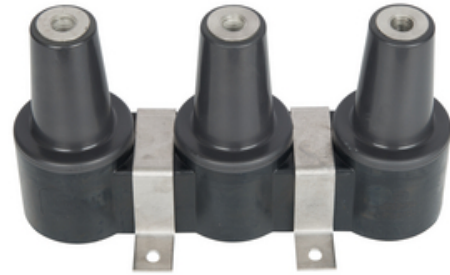




## 25/28 kV 600 Amp 3-pt Junction U-Straps.

By Hubbell  
Catalog # [625J3U](#)



25/28 kV 600 Amp 3-pt Junction U-Straps.

### Features

- Meets or Exceeds IEEE Std. 386 and IEEE Std. 592 requirements
- Interchangeable with other products meeting the same requirements
- Fully shielded, insulated and submersible

### General

EU RoHS Indicator	No
Number of Positions	3
Type	600 Amp Dead Break
UPC	096359393269

### Dimensions

Weight	7.05 lb
--------	---------

### Electrical Ratings

AC Withstand Voltage (1 min)	40 kV
Basic Impulse Level	125 kV
Corona Extinction (3pC)	19 kV
Current Rating	600 A
kV Class	25/28 kV;15 kV

### Logistics

Pallet Quantity	112
Standard Package	1

### Product Assets

[Catalogs - Cable Accessories](#)  
[Installation Manuals - 600A Deadbreak Junction](#)  
[Sales Drawings - Junctions, 25KV 600A](#)  
[SDS - VERSILUBE G661 SILICONE COMPOUND](#)  
[Test Documents - Cable Accessories Test Report - 15kV & 25kV 600A](#)  
[Video - Grease Best PRactices](#)



A Hubbell brand