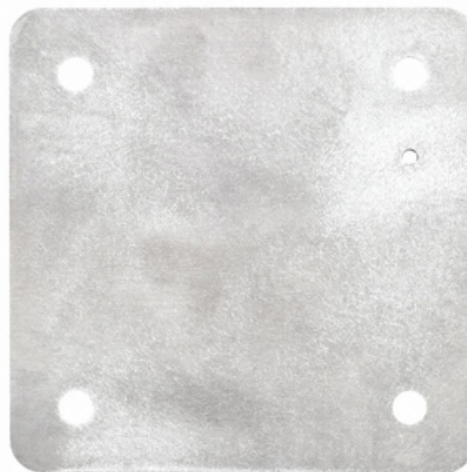




## Mounting Pan, 6061 Aluminum, for use in EXB-1616 Bolted Enclosure

By Killark  
Catalog # 7995-1

Mounting Pan, 6061 Aluminum, for use in EXB-1616 Bolted Enclosure



\*Representative Image

### Features

- Mounting pans are 1/8" or 3/16" thick sheet aluminum and are sized to provide the maximum usable surface area when installed.
- Made of high strength, light weight, corrosion resistant 6061-T6 aluminum sheet stock.

### General

Application	For use with EXB and EXBLT Series enclosures.
Catalog Number	7995-1
Color	Gray
EU RoHS Indicator	Contact Manufacturer
Material	Aluminum, Copper Free (less than 4/10 of 1%)
Series	EXB
Type	Mounting Pan
	Mounting Pan
UPC	783936982441

### Dimensions

Dimensions	14 in x 14 in x 0.125 in
Gross Weight with Packaging	3
Height	0.125 in
Length	14 in
Width	14 in

### Product Assets

[Catalogs - Killark Catalog](#)  
[Customer Notices - Prop 65 Notice](#)