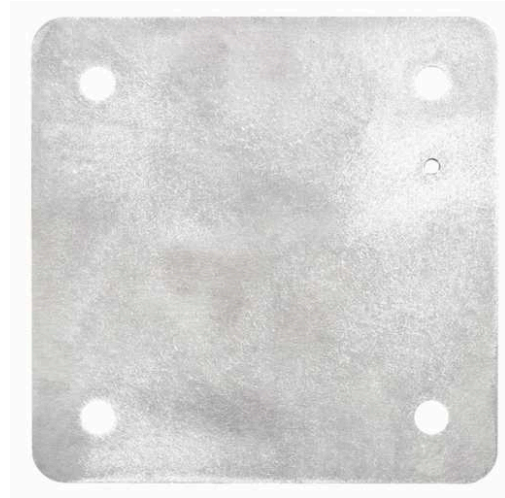




Mounting Pan, 6061 Aluminum, for use in EXB-66 Bolted Enclosure

By Killark
Catalog # [7997-5](#)

Mounting Pan, 6061 Aluminum, for use in EXB-66 Bolted Enclosure



*Representative Image

Features

- Mounting pans are 1/8" or 3/16" thick sheet aluminum and are sized to provide the maximum usable surface area when installed.
- Made of high strength, light weight, corrosion resistant 6061-T6 aluminum sheet stock.

Application

For use with EXB and XJB Series enclosures.

General

Color	<ul style="list-style-type: none">• Gray• Gris
EU RoHS Indicator	Contact Manufacturer
Material	Aluminum, Copper Free (less than 4/10 of 1%)
Series	EXB
Type	<ul style="list-style-type: none">• Mounting Pan• Mounting Pan
UPC	783936982731

Dimensions

Dimensions	5 in x 5 in x 0.125 in
Gross Weight with Packaging	0.5
Height	0.125 in
Length	5 in
Width	5 in

Product Assets

[Catalogs - Killark Catalog](#)
[Customer Notices - Prop 65 Notice](#)



A proud member of the Hubbell Family.

©2023 Hubbell Incorporated. All rights reserved.
KILL-7997-5-SPEC-EN | REV 7/2023