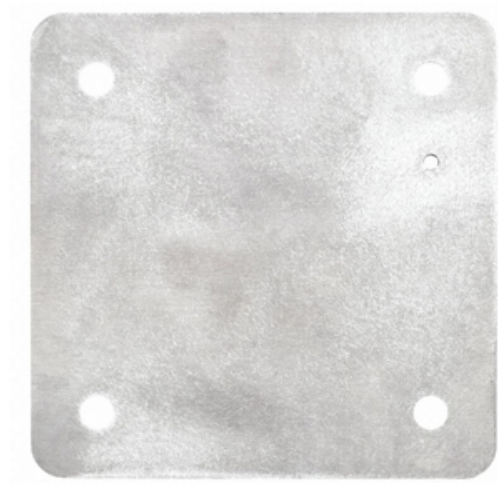




## Mounting Pan, 6061 Aluminum, for use in EXB-612 Bolted Enclosure

By Killark  
Catalog # 7997-6

Mounting Pan, 6061 Aluminum, for use in EXB-612 Bolted Enclosure



\*Representative Image

### Features

- Mounting pans are 1/8" or 3/16" thick sheet aluminum and are sized to provide the maximum usable surface area when installed.
- Made of high strength, light weight, corrosion resistant 6061-T6 aluminum sheet stock.

### General

Catalog Number	7997-6
EU RoHS Indicator	Contact Manufacturer
Material	Aluminum, Copper Free (less than 4/10 of 1%)
Series	EXB
Type	Mounting Pan
	Mounting Pan
UPC	783936019864

### Product Assets

[Catalogs - Killark Catalog](#)  
[Customer Notices - Prop 65 Notice](#)