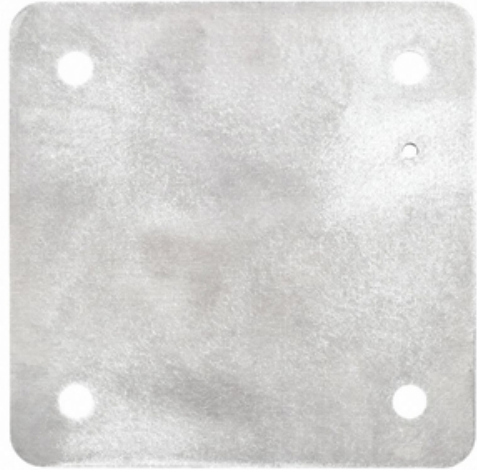




Mounting Pan, 6061 Aluminum, for use in EXB-2424 Bolted Enclosure

By Killark
Catalog # 8000-1

Mounting Pan, 6061 Aluminum, for use in EXB-2424 Bolted Enclosure



*Representative Image

Features

- Mounting pans are 1/8" or 3/16" thick sheet aluminum and are sized to provide the maximum usable surface area when installed.
- Made of high strength, light weight, corrosion resistant 6061-T6 aluminum sheet stock.

General

Application	For use with EXB and EXBLT Series enclosures.
Catalog Number	8000-1
Color	Gray
EU RoHS Indicator	Contact Manufacturer
Material	Aluminum, Copper Free (less than 4/10 of 1%)
Series	EXB
Type	Mounting Pan
	Mounting Pan
UPC	783936982861

Dimensions

Dimensions	22.25 in x 22.25 in x 0.125 in
Gross Weight with Packaging	8
Height	0.125 in
Length	22.25 in
Width	22.25 in

Product Assets

- [Catalogs - Killark Catalog](#)
- [Customer Notices - Prop 65 Notice](#)