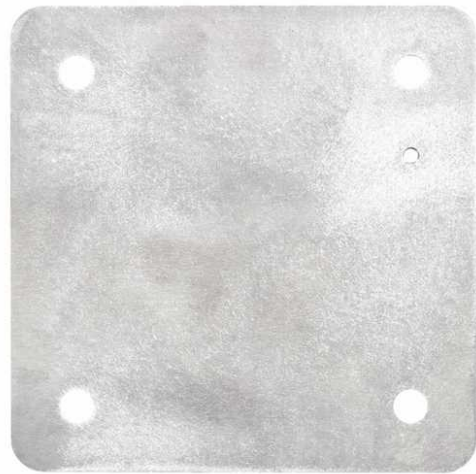




Mounting Pan, 6061 Aluminum, for use in EXB-612 Bolted Enclosure

By Killark
Catalog # [7997-6](#)

Mounting Pan, 6061 Aluminum, for use in EXB-612 Bolted Enclosure.



*Representative Image

Features

- Mounting pans are 1/8" or 3/16" thick sheet aluminum and are sized to provide the maximum usable surface area when installed.
- Made of high strength, light weight, corrosion resistant 6061-T6 aluminum sheet stock.

General

EU RoHS Indicator	Contact Manufacturer
Material	Aluminum, Copper Free (less than 4/10 of 1%)
Series	EXB
Type	<ul style="list-style-type: none">• Mounting Pan• Mounting Pan
UPC	783936019864

Product Assets

- [Catalogs - Killark Catalog](#)
- [Customer Notices - Prop 65 Notice](#)



A proud member of the Hubbell Family.

©2024 Hubbell Incorporated. All rights reserved.
KILL_CA-7997-6-SPEC-EN | REV 1/2024