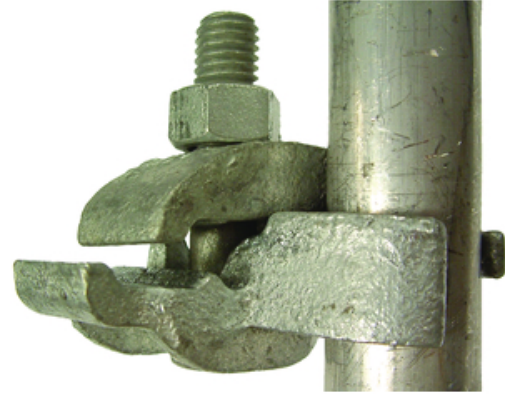


## ECC050

By Killark  
Catalog # [ECC050](#)

½" Galvanized Steel, Edge Conduit Clamp.



### Features

- One of three available styles that meet every installation need
- Heavy duty U-bolts, hex bolts and hex nuts
- Capable of supporting heavy loads

### Application

Designed to secure rigid metal conduit, IMC or EMT across, parallel or perpendicular to channel, beam, and angle supports.

### General

Color	<ul style="list-style-type: none"><li>• Glossy gray</li><li>• Gris Brillant</li></ul>
Finish Type	Galvanisé
Material	Steel
Type	<ul style="list-style-type: none"><li>• Edge Conduit Clamp</li><li>• Edge Conduit Clamp</li></ul>
UPC	783936391236

### Dimensions

Dimensions	3 in x 3 in x 0.1 in
Gross Weight with Packaging	0.77
Height	0.1 in
Hub Size	1/2"
Length	3 in
Width	3 in

### Certifications and Compliance

UL File Number	E213669
----------------	---------

### Logistics

Carton Quantity	25
-----------------	----

### Product Assets

[Catalogs - Killark Catalog](#)  
[Customer Notices - Prop 65 Notice](#)