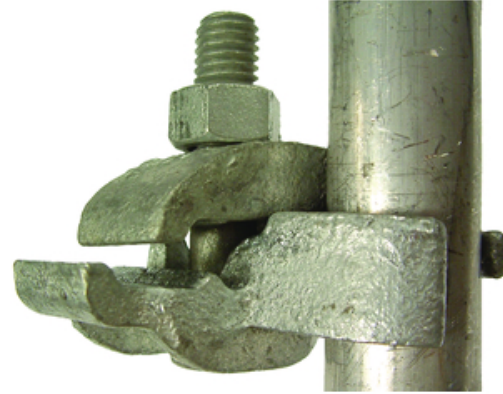




ECC075 - 3/4" Galvanized Steel, Edge Conduit Clamp

By Killark
Catalog # [ECC075](#)

3/4" Galvanized Steel, Edge Conduit Clamp.



Features

- One of three available styles that meet every installation need
- Heavy duty U-bolts, hex bolts and hex nuts
- Capable of supporting heavy loads

Application

Designed to secure rigid metal conduit, IMC or EMT across, parallel or perpendicular to channel, beam, and angle supports.

General

Color	<ul style="list-style-type: none">• Glossy gray• Glossy gray
Finish Type	Galvanized
Material	Steel
Type	<ul style="list-style-type: none">• Edge Conduit Clamp• Edge Conduit Clamp
UPC	783936391243

Dimensions

Dimensions	3 in x 3 in x 0.1 in
Gross Weight with Packaging	0.81
Height	0.1 in
Hub Size	3/4"
Length	3 in
Weight	0.81 lb
Width	3 in

Certifications and Compliance

UL File Number	E213669
----------------	---------

Logistics

Carton Quantity	25
-----------------	----

Product Assets

[Catalogs - Killark Catalog](#)
[Customer Notices - Prop 65 Notice](#)



A proud member of the Hubbell Family.

©2024 Hubbell Incorporated. All rights reserved.
KILL_CA-ECC075-SPEC-EN | REV 1/2024