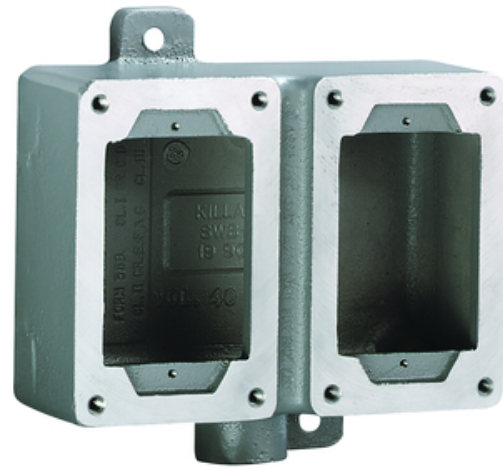




SWB Series - Dead-End Double-Gang Device Body- Hub Size 3/4 Inch

By Killark
Catalog # [SWB-8](#)

SWB Series - Aluminum Dead-End Double-Gang Device Body For Use With XCS/XS/XT Cover Assemblies - Hub Size 3/4 Inch.



*Representative Image

Features

- Copper free cast aluminum alloy.
- Ground flange joint between bolted cover and box provide required flame path.
- Accepts both miniature and standard size push buttons.
- Internal ground screw.

Application

Hazardous locations due to the presence of flammable gases or vapors, combustibile dusts, or easily ignitable fiber or flyings. Installations at petroleum refineries, chemical and petrochemical plants, and other processing or storage facilities where similar hazards exist. Use in conjunction with magnetic starters or contactors for remote control of motors.

General

Color	<ul style="list-style-type: none">• Gray• Gris
EU RoHS Indicator	Contact Manufacturer
Material	Aluminum, Copper Free (less than 4/10 of 1%)
Mounting Type	Wall
Series	SWB
Type	<ul style="list-style-type: none">• Aluminum Device Body• Aluminum Device Body
UPC	783936630083

Dimensions

Depth	2-1/4
Dimensions	11.75 in x 7.5 in x 4 in
Gross Weight with Packaging	2.93
Height	4 in
Hub Size	3/4"
Length	11.75 in
Weight	2.93 lb
Width	7.5 in

Certifications and Compliance

CSA File Number	LR11712
Hazardous Rating(s)	<ul style="list-style-type: none">• Class I, Divisions 1 & 2, Groups C, D• Class I, Zones 1 & 2, Groups IIB, IIA• Class II, Divisions 1 & 2, Groups E, F, G• Class III, Divisions 1 & 2
UL File Number	E53360

Product Assets

[3D Models - SWB-8 3D Model \(STP\)](#)
[Certifications - SWB Series Control Station & Assemblies UL Certification](#)
[Certifications - SWB Series Enclosures UL Certification](#)
[Customer Notices - Prop 65 Notice](#)
[Engineering Drawing - SWB-8 Engineering Drawing \(DWG\)](#)
[Installation Manuals - SWB Series Control Stations IOM K0569F](#)
[Sales Drawings - SWB-8 Sales Drawing \(PDF\)](#)



A proud member of the Hubbell Family.

©2024 Hubbell Incorporated. All rights reserved.
KILL_CA-SWB-8-SPEC-EN | REV 1/2024