

JUNCTION BOXES

PRISM[®]



B7EP



B7EQ

B7E

Empty / Control Enclosure

NEC / CEC Certifications

Class I, Div. 1 & 2, Groups B, C, & D

Class I Zone 1 IIB+H2 Gb

Class II, Div. 1 & 2, Groups E, F, & G

Class III

Type 3, 4, 4X

Ta = -25°C to +40°C

Ta = -50°C to +40°C

File E83969

Certificate LR11716



FEATURES-SPECIFICATIONS

Features

- Compact size enclosures for application flexibility
- Type 4, 4X rated – providing protection from hose directed water and corrosion
- Fewer cover bolts reduce installation and maintenance time
- Removable ductile mounting lugs adjust to irregular mounting surfaces
- See Controls section for “G Series” control operators and accessories
- Use ‘long style’ operators

Materials

- Enclosures: Copper-free aluminum (less than 1/10 of 1% copper content)
- Cover Bolts: 316 stainless steel
- O-ring Gasket: Silicone
- Finish: Grey Powder Polyester painted exterior, electrostatically applied.

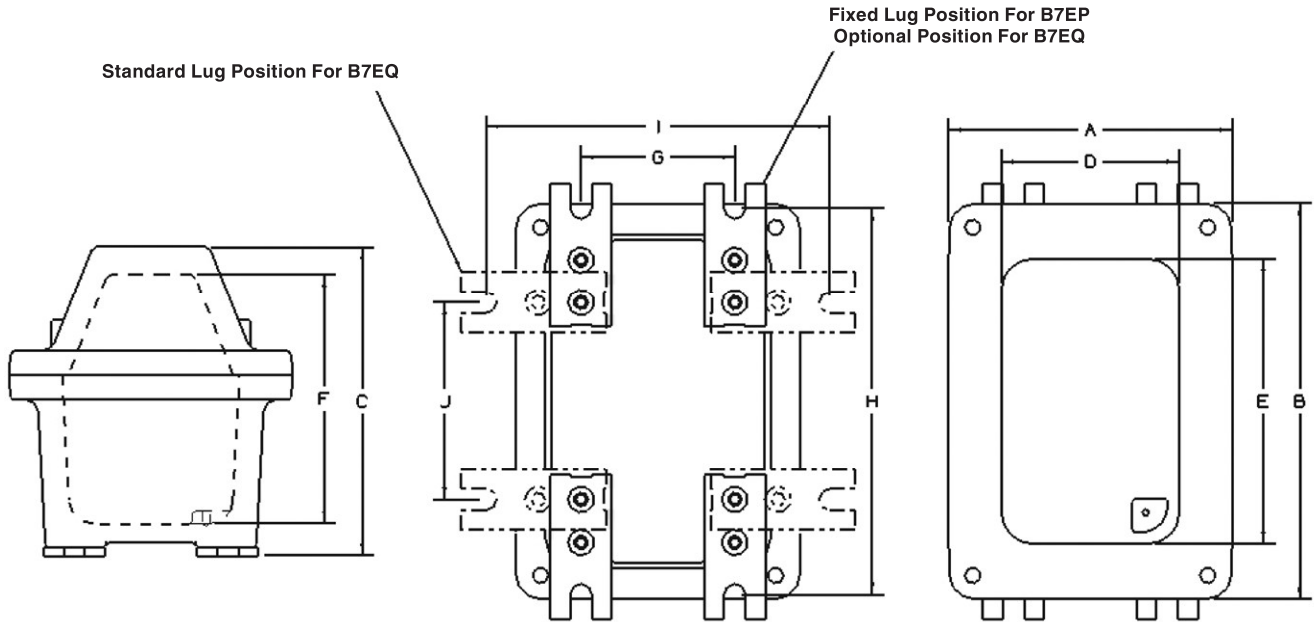
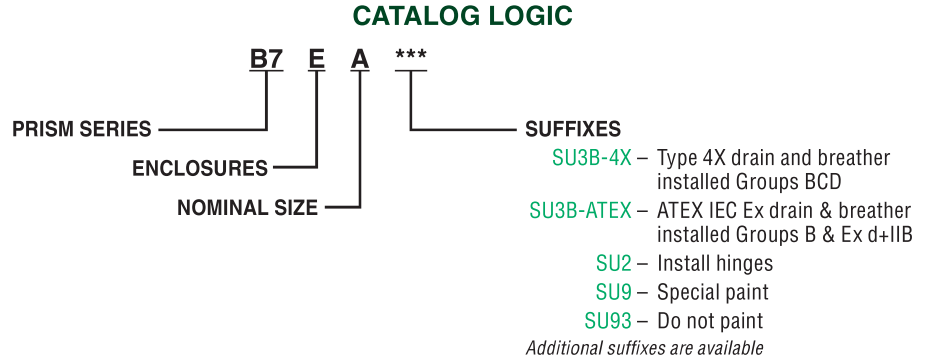


ENCLOSURES

B7EP, B7EQ SERIES

JUNCTION BOXES

MODIFICATIONS	
SUFFIX NUMBER	DESCRIPTION
KIT-251	100 amp ground lug
SU-2	HINGE-12L INSTALLED
SU3B4X	Drain and Breather installed (Class 1, Div. 1 & 2, Group B, C, and D, Type 4x)
SU9	Special paint finish
SU14	Fungus proofing of enclosure



DIMENSIONS

CATALOG NUMBER	EXTERNAL DIMENSIONS			INTERNAL DIMENSIONS			MOUNTING DIMENSIONS				MAX. NO. OPERATORS	OPERATOR SPACING	MAX. SIZE CONDUIT
	A	B	C	D	E	F	G	H	I	J			
B7EP	5.75 (146)	8.06 (205)	6.31 (160)	3.63 (92)	5.81 (148)	5.06 (128)	3.13 (80)	8.13 (206)	N/A	N/A	2	2.5 (64)	1"
B7EQ	8.13 (207)	13.06 (332)	7.81 (198)	4.25 (108)	9.18 (233)	6.93 (176)	2.5 (64)	11.38 (289)	6.38 (162)	7.5 (190)	4	2 (51)	1-1/2"

All dimension in. (mm)