

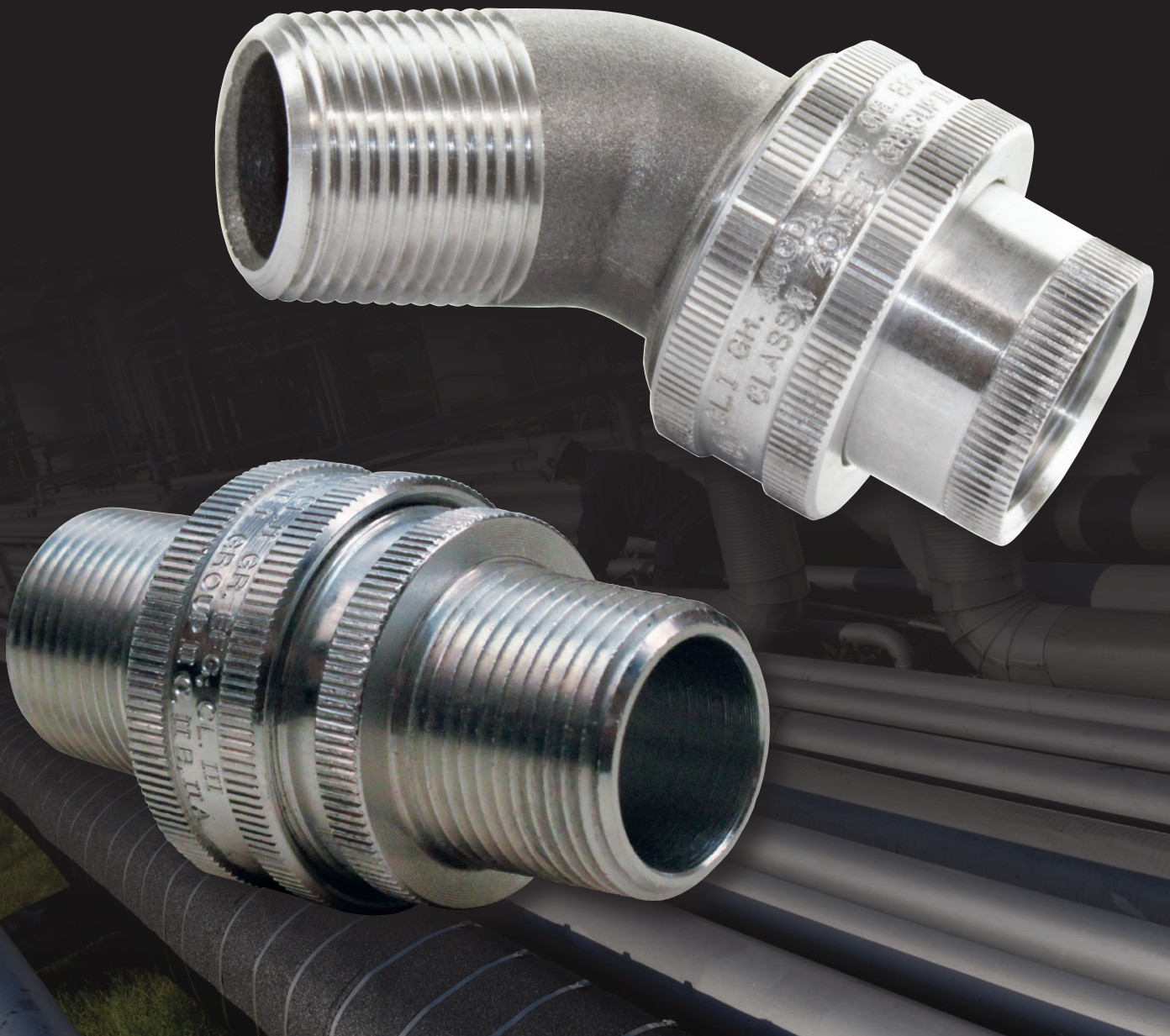


Harsh & Hazardous

KILLARK®

GUMM/GUML Series Unions

for Harsh and Hazardous Environments





UNIONS



- GUMM 1/2", 3/4", & 1" / GUML 1/2", 3/4" Class I, Div. 1 & 2, Groups A,B,C,D Class I, Zone I, IIC, IIB, IIA Class I, Zone 1, Groups IIC, IIB, IIA Class II, Div. 1 & 2, Groups E,F,G Class III

- GUMM-EX 1/2", 3/4", & 1"

Global Listings

ATEX / IEC Ex Certified

File nos. ITS09ATEX16417U

IECEXITS09.0024U

Ex IICG

Ex d IIC



LISTED File No. E 10514

Certified File No. LR11716

FEATURES-SPECIFICATIONS

Applications

- Unions are used to connect two pieces of conduit or attach conduit to junction boxes, fittings, or devices using male to male thread
- Permits removal of equipment without turning or removal of conduit

Features

- Threaded for rigid conduit or IMC
- Tapered threads (NPT)
- Strong and durable construction

Material/Finish

Copper-free Aluminum
(less than 4/10 of 1%)

- Natural Finish
- 1/2", 3/4", 1"

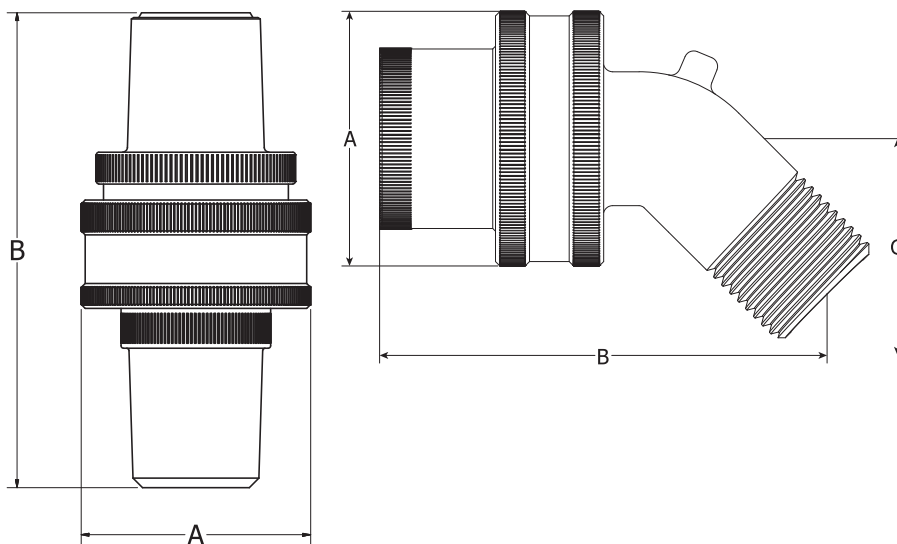
Third-Party Standards

UL Standards 886 and 1203
CSA Standard C22.2 No. 30

MALE TO MALE			
CATALOG NUMBER	HUB SIZE	DIMENSIONS	
		A DIAMETER	B LENGTH
KILLARK ALUMINUM			
GUMM-1	1/2"	1.44"	2.98"
GUMM-2	3/4"	1.62"	2.98"
GUMM-3	1"	2"(51)	3.52"
GUMM-1-EX	1/2"	1.44"	2.98"
GUMM-2-EX	3/4"	1.62"	2.98"
GUMM-3-EX	1"	2"(51)	3.52"

45° ANGLE UNION				
CATALOG NUMBER	HUB SIZE	DIMENSIONS		
		A DIAMETER	B LENGTH	C
KILLARK ALUMINUM				
GUML451	1/2"	2.80"	1.40"	1.30"
GUML452	3/4"	2.90"	1.63"	1.33"

Dimensions



HKFL-GUMM 07-18 © Killark, 2018