



KILLARK®

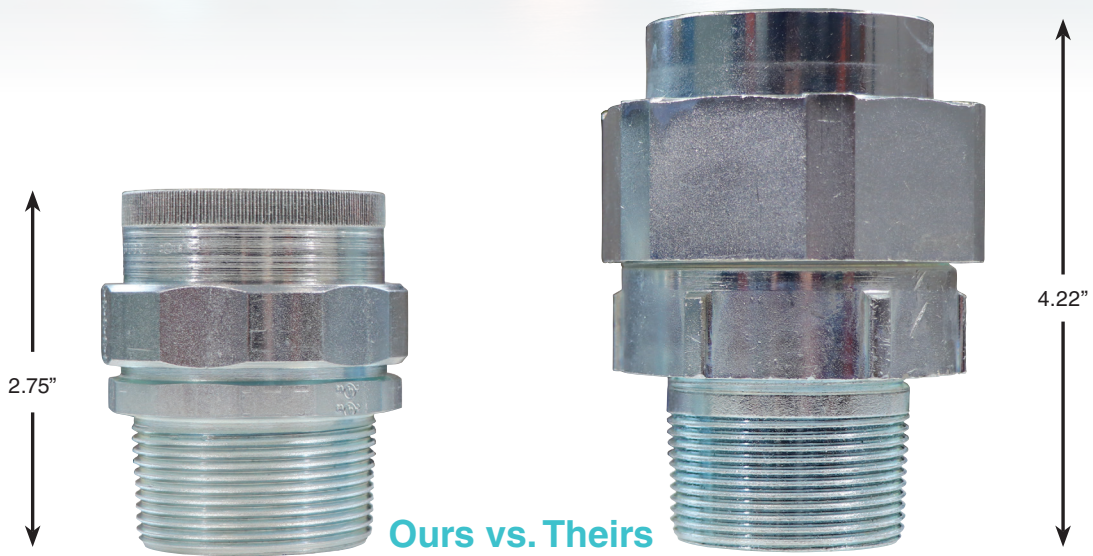
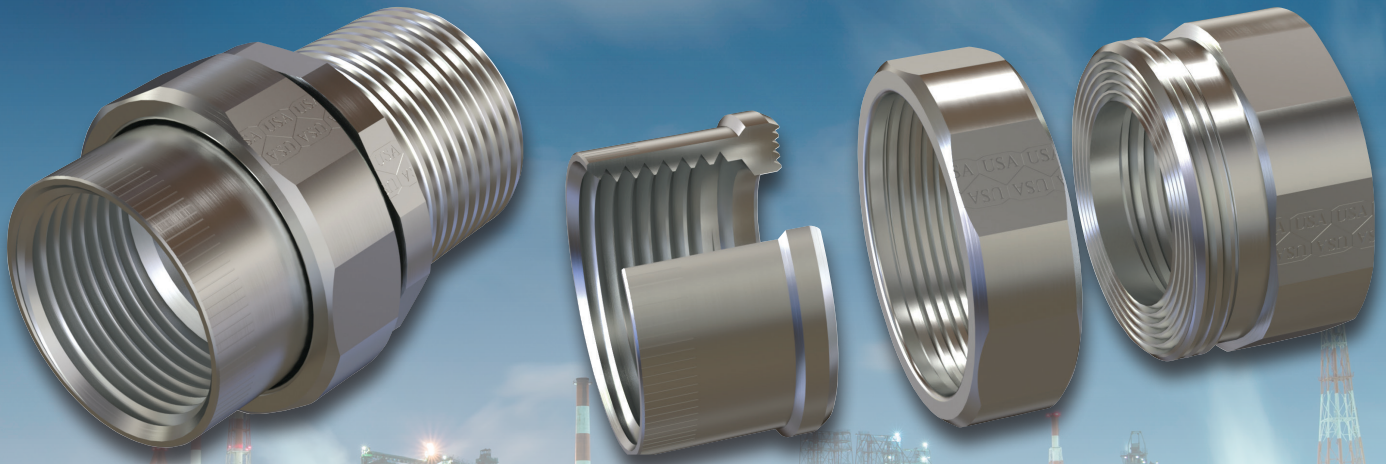
UNIONS

Next Generation of Hazardous-Rated Unions





UNF/UNY UNIONS



Side by Side comparison a UNY 1-1/2" vs Competition UNY 1-1/2"



STEEL:

1/2" – 1 1/4"

Class I, Div. 1 & 2, Groups A, B, C, D

1 1/2", 3", 3 1/2", 4"

Class I, Div. 1 & 2, Groups B, C, D

2" – 2 1/2"

Class I, Div. 1 & 2, Groups C, D

Class II, Div. 1 & 2 Groups E, F, G

Class III

ALUMINUM:

1/2" – 1"

Class I, Div. 1 & 2, Groups A, B, C, D

3" – 4"

Class I, Div. 1 & 2, Groups B, C, D

1 1/4" – 2 1/2"

Class I, Div. 1 & 2, Groups C, D

Class II, Div. 1 & 2 Groups E, F, G

Class III



E10514

Type 3, 4

Tamb US -25°C to +60°C

Tamb Can. -50°C to +60°C

FEATURES-SPECIFICATIONS

Applications

- UNF/UNY unions are used to connect two pieces of conduit or attach conduit to junction boxes, fittings, or devices
- Permits removal of equipment without turning or removal of conduit

Features

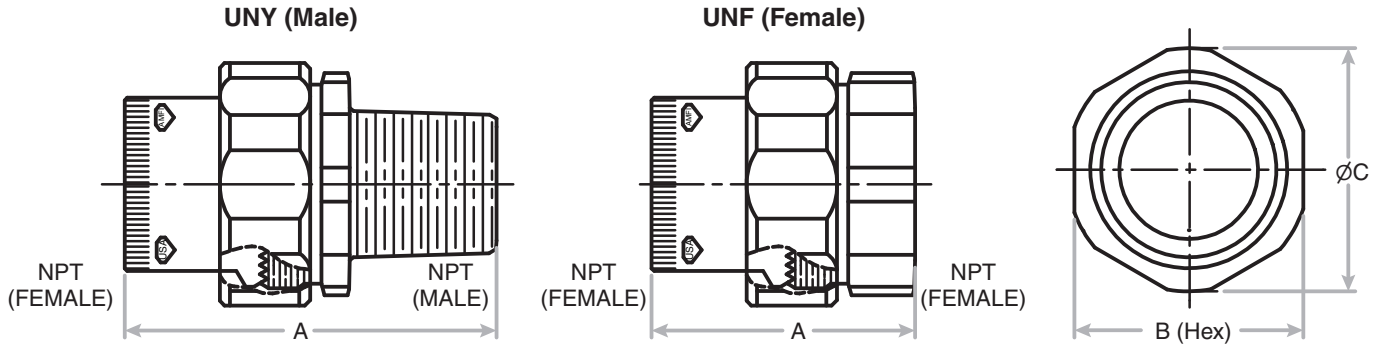
- Unique design offers a compact size for lighter weight and smaller profile for critical clearances with equipment
- Extruded bar stock construction provides superior threads over sand cast and provides twice the tensile strength
- Uniform design across all sizes for aesthetic and robust appeal
- Made in the USA
- Male to Female union has nonremovable nipple to ensure tight seal with union and pipe/equipment
- Lighter weight puts less stress on the conduit support system

Materials

- Copper-free Aluminum
 - » (less than 4/10 of 1%)
- Steel
 - » Zinc electro plated



UNF/UNY UNIONS



FEMALE TO FEMALE									
CATALOG NUMBER	HUB SIZE	DIMENSIONS			CATALOG NUMBER	HUB SIZE	DIMENSIONS		
ALUMINUM		A LENGTH	B (HEX)	C DIAMETER	STEEL		A LENGTH	B (HEX)	C DIAMETER
UNF50AL	1/2"	1-9/16" (39.7)	1-5/16" (33.3)	1-3/8" (34.9)	UNF50	1/2"	1-9/16" (39.7)	1-5/16" (33.3)	1-3/8" (34.9)
UNF75AL	3/4"	1-9/16" (39.7)	1-7/16" (36.5)	1-1/2" (38.1)	UNF75	3/4"	1-9/16" (39.7)	1-7/16" (36.5)	1-1/2" (38.1)
UNF100AL	1"	1-13/16" (45.9)	1-11/16" (42.9)	1-3/4" (44.5)	UNF100	1"	1-13/16" (45.9)	1-11/16" (42.9)	1-3/4" (44.5)
UNF125AL	1-1/4"	1-15/16" (49.3)	2-1/16" (52.4)	2-3/16" (55.6)	UNF125	1-1/4"	1-15/16" (49.3)	2-1/16" (52.4)	2-3/16" (55.6)
UNF150AL	1-1/2"	1-15/16" (49.3)	2-5/16" (58.7)	2-3/8" (60.3)	UNF150	1-1/2"	1-15/16" (49.3)	2-5/16" (58.7)	2-3/8" (60.3)
UNF200AL	2"	1-15/16" (49.3)	2-13/16" (71.4)	2-7/8" (73)	UNF200	2"	1-15/16" (49.3)	2-13/16" (71.4)	2-7/8" (73)
UNF250AL	2-1/2"	2-13/16" (71.4)	3-15/16" (100)	4" (101.6)	UNF250	2-1/2"	2-13/16" (71.4)	3-1/4" (82.55)	3-3/8" (85.7)
UNF300AL	3"	2-13/16" (71.4)	4-7/16" (112.7)	4-9/16" (115.9)	UNF300	3"	2-13/16" (71.4)	3-15/16" (100)	4" (101.6)
UNF350AL	3-1/2"	3" (76.2)	4-15/16" (125.4)	5-1/16" (128.6)	UNF350	3-1/2"	3" (76.2)	4-7/16" (112.7)	4-9/16" (115.9)
UNF400AL	4"	3" (76.2)	4-15/16" (125.4)	5-1/8" (130.2)	UNF400	4"	3" (76.2)	4-15/16" (125.4)	5-1/16" (128.6)
MALE TO FEMALE									
UNY50AL	1/2"	2-1/16" (52.4)	1-5/16" (33.3)	1-3/8" (34.9)	UNY50	1/2"	2-1/16" (52.4)	1-5/16" (33.3)	1-3/8" (34.9)
UNY75AL	3/4"	2-1/8" (54)	1-7/16" (36.5)	1-1/2" (38.1)	UNY75	3/4"	2-1/8" (54)	1-7/16" (36.5)	1-1/2" (38.1)
UNY100AL	1"	2-7/16" (61.9)	1-11/16" (42.9)	1-3/4" (44.5)	UNY100	1"	2-7/16" (61.9)	1-11/16" (42.9)	1-3/4" (44.5)
UNY125AL	1-1/4"	2-9/16" (65.1)	2-1/16" (52.4)	2-3/16" (55.6)	UNY125	1-1/4"	2-9/16" (65.1)	2-1/16" (52.4)	2-3/16" (55.6)
UNY150AL	1-1/2"	2-3/4" (69.9)	2-5/16" (58.7)	2-3/8" (60.3)	UNY150	1-1/2"	2-3/4" (69.9)	2-5/16" (58.7)	2-3/8" (60.3)
UNY200AL	2"	2-7/8" (73)	2-13/16" (71.4)	2-7/8" (73)	UNY200	2"	2-7/8" (73)	2-13/16" (71.4)	2-7/8" (73)
UNY250AL	2-1/2"	4-1/16" (103.2)	3-15/16" (100)	4" (101.6)	UNY250	2-1/2"	4-1/16" (103.2)	3-1/4" (82.55)	3-3/8" (85.7)
UNY300AL	3"	4-1/16" (103.2)	4-7/16" (112.7)	4-9/16" (115.9)	UNY300	3"	4-1/16" (103.2)	3-15/16" (100)	4" (108)
UNY350AL	3-1/2"	4-1/4" (108)	4-15/16" (125.4)	5-1/16" (128.6)	UNY350	3-1/2"	4-1/4" (108)	4-7/16" (112.7)	4-9/16" (115.9)
UNY400AL	4"	4-1/4" (108)	4-15/16" (125.4)	5-1/8" (130.2)	UNY400	4"	4-1/4" (108)	4-15/16" (125.4)	5-1/16" (128.6)



KILLARK®

Hubbell Canada

870 Brock Road South
Pickering ON L1W 1Z8
Telephone : 1-800-465-7051

www.hubbell.ca