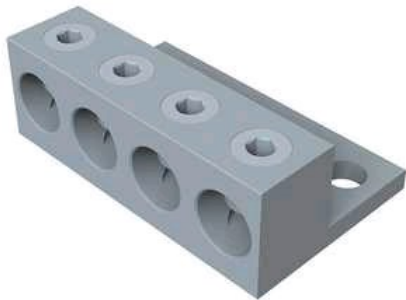


# L2A2-500I

by CMC  
Catalog ID: L2A2-500I



General purpose transformer connectors, Dual rated connectors for Aluminum or Copper conductors

- Clear Plated for low-contact resistance.
- Fully tested to ANSI C119.4 for Class 'A' connectors.
- Supplied with aluminum radial tipped set-screws.
- Connector fabricated from 6061-T6 aluminum alloy for conductivity and strength.
- Designed for installation on standard two and four-hole spades.
- All mounting holes 1.75" on center line.
- For installation, CMC® recommends the use of a 9" insulated Allen wrench.
- A torque wrench should be used to ensure the proper torque is achieved.

## Product Details

### General

Material	Aluminum Alloy, 6061-T6
Number Of Outlets	2
Type	Bolted Lugs & Terminals
UPC	192663075300

### Dimensions

Depth	0.56 in
Height	1.56 in
Length	3.19 in
Width	3 in

### Electrical Ratings

Voltage Rating	600 V
----------------	-------

### Conductor Related

Conductor Range

500 Kcmil - #10 AWG



**CONNECTOR MANUFACTURING COMPANY**  
3501 Symmes Road  
Hamilton, Ohio 45015 - 1369  
513 - 860 - 4455(Press 2 for Customer Service and Sales)  
To email customer Service: [jrex @cmclugs.com](mailto:jrex@cmclugs.com)

