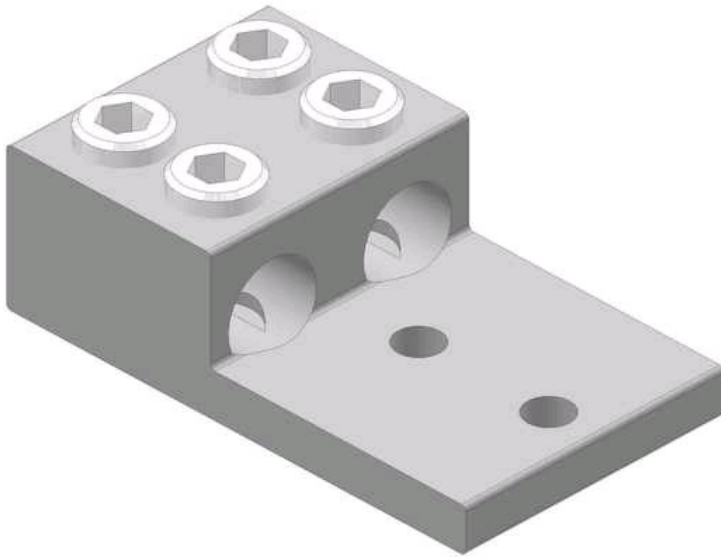


# L2D2-600

by CMC  
Catalog ID: L2D2-600



Aluminum Two Conductor Solderless Lugs, Type: L2D2 ,600 - 6 AWG (2), Al/Cu Rated, Tin Plated. CMC® Two conductor solderless connectors are manufactured from high strength 6061-T6 aluminum alloy to insure both maximum strength and conductivity. They are dual rated for both copper and aluminum conductors and are electro tin plated to provide low contact resistance and protection against corrosion. Assembly can be made with only a screwdriver or allen wrench and the connectors are reusable. 90° C Rated (486B Listed). UL listed and CSA certified.

- Manufactured from high strength 6061-T6 aluminum alloy to ensure both maximum strength and conductivity.
- Assembly can be made with only a screwdriver or Allen wrench
- Connectors are reusable
- Electro tin plated to provide low contact resistance
- Material:Aluminum

## Product Details

### General

Material	Aluminum
Type	Bolted Lugs & Terminals
UPC	192663018024

### Dimensions

Height	1.5 in
Length	5.31 in
Width	2.75 in

### Conductor Related



**CONNECTOR MANUFACTURING COMPANY**  
3501 Symmes Road  
Hamilton, Ohio 45015 - 1369  
513 - 860 - 4455(Press 2 for Customer Service and Sales)  
To email customer Service: [jrex @cmclugs.com](mailto:jrex@cmclugs.com)

