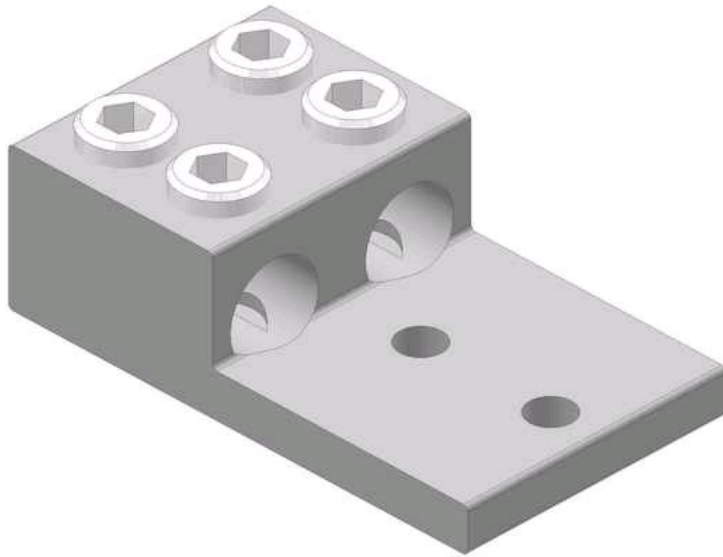


L2D2-800

by CMC
Catalog ID: L2D2-800



Aluminum Two Conductor Solderless Lugs, Type: L2D2 ,800 - 300 AWG (2), Al/Cu Rated, Tin Plated. CMC® Two conductor solderless connectors are manufactured from high strength 6061-T6 aluminum alloy to insure both maximum strength and conductivity. They are dual rated for both copper and aluminum conductors and are electro tin plated to provide low contact resistance and protection against corrosion. Assembly can be made with only a screwdriver or allen wrench and the connectors are reusable. 90° C Rated (486B Listed). UL listed and CSA certified.

- Manufactured from high strength 6061-T6 aluminum alloy to ensure both maximum strength and conductivity.
- Assembly can be made with only a screwdriver or Allen wrench
- Connectors are reusable
- Electro tin plated to provide low contact resistance
- Material:Aluminum

Product Details

General

Material	Aluminum
Type	Bolted Lugs & Terminals
UPC	192663018048

Dimensions

Height	1.87 in
Length	6.19 in
Width	3.5 in

Conductor Related



CONNECTOR MANUFACTURING COMPANY
3501 Symmes Road
Hamilton, Ohio 45015 - 1369
513 - 860 - 4455(Press 2 for Customer Service and Sales)
To email customer Service: [jrex @cmclugs.com](mailto:jrex@cmclugs.com)

