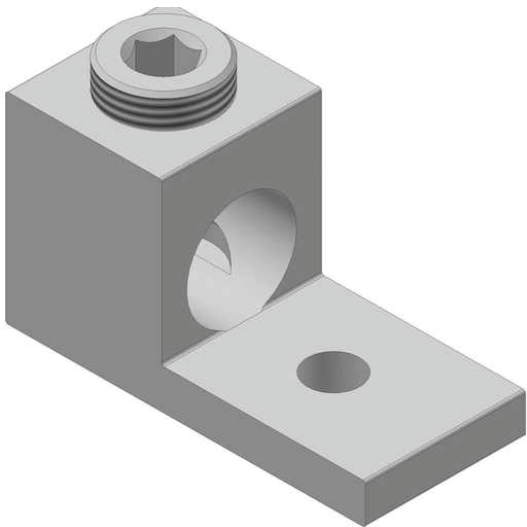




LA-1000

by CMC
Catalog ID: LA-1000



Dual Rated Solderless Connector, wire range 1000 AWG -350 AWG. TYPE: LA .CMC® L-shaped single hole solderless connectors are manufactured from high strength 6061-T6 aluminum alloy to insure both maximum strength and conductivity. They are dual rated for both copper and aluminum conductors and are electro tin plated to provide low contact resistance and protection against corrosion. Assembly can be made with only a screwdriver or allen wrench and the connectors are reusable.. 90° C Rated (486B Listed). UL listed and CSA certified.

Product Details

General

Material	Aluminum
Type	Bolted Lugs & Terminals
UPC	192663019601

Dimensions

Dimensions	3.5 in x 1.75 in x 1.94 in
Height	1.94 in
Length	3.5 in
Width	1.75 in

Conductor Related

Conductor - Copper Str Size Range	1000-350 Kcmil
-----------------------------------	----------------