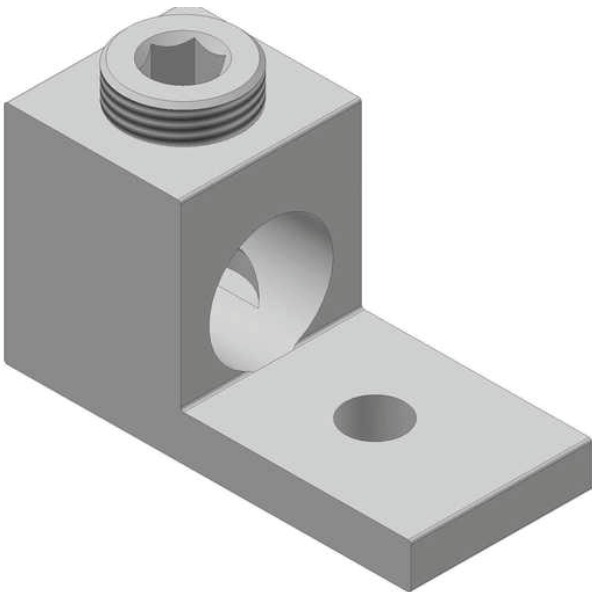




# LA-250

by CMC  
Catalog ID: LA-250



Dual Rated Solderless Connector, wire range 250 AWG -6 AWG. TYPE: LA .CMC® L-shaped single hole solderless connectors are manufactured from high strength 6061-T6 aluminum alloy to insure both maximum strength and conductivity. They are dual rated for both copper and aluminum conductors and are electro tin plated to provide low contact resistance and protection against corrosion. Assembly can be made with only a screwdriver or allen wrench and the connectors are reusable.. 90° C Rated (486B Listed). UL listed and CSA certified. UL Listed for Flexible Cable

## Product Details

### General

|          |                         |
|----------|-------------------------|
| Material | Aluminum                |
| Type     | Bolted Lugs & Terminals |
| UPC      | 192663014132            |

### Dimensions

|            |                       |
|------------|-----------------------|
| Dimensions | 2 in x 1 in x 1.13 in |
| Height     | 1.13 in               |
| Length     | 2 in                  |
| Width      | 1 in                  |

### Conductor Related

|                                   |                 |
|-----------------------------------|-----------------|
| Conductor - Copper Str Size Range | 250 Kcmil-6 AWG |
|-----------------------------------|-----------------|