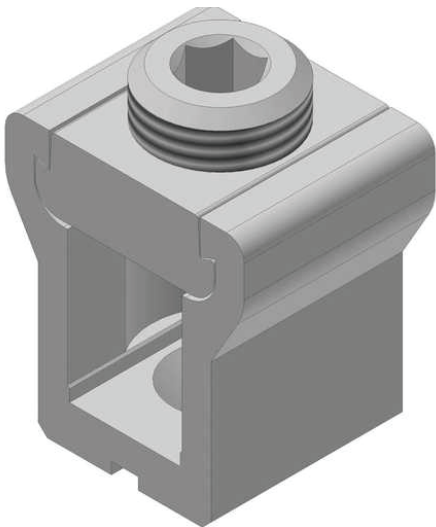




LI-500

by CMC
Catalog ID: LI-500



Rectangular Connectors

- Made of 6061-T6 Aluminum Alloy
- Electro-Tin Plated
- Dual-Rated
- Easy Installation
- Connectors are Reusable

Product Details

General

Material	Aluminum Alloy, 6061-T6
Type	Bolted Lugs & Terminals

Dimensions

Dimensions	1.50 in x 1.66 in x 1.63 in
Height	1.63 in
Length	1.50 in
Width	1.66 in

Conductor Related

Conductor Range	500 Kcmil - #3/0 AWG
-----------------	----------------------