

LARGE SECTIONAL ALUMINUM HEATED ENCLOSURES: SPECIFICATION:

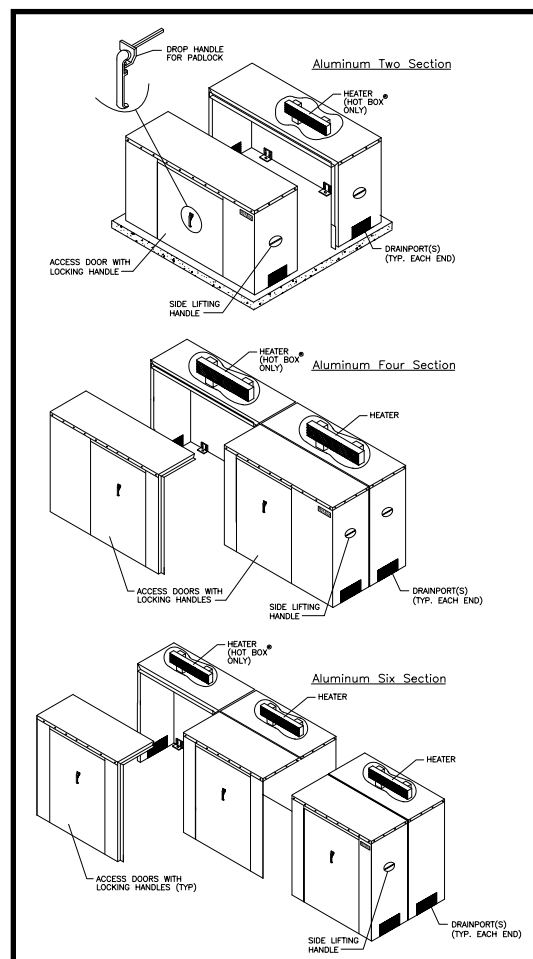
The enclosure, certified to ASSE 1060*, shall be of min. .050" tk. reinforced stucco embossed aluminum sheeting (with optional .063" tk.), providing access through removable doors and being totally removable for maintenance purposes. A modular design with "tongue and groove" sections is required; with no panels requiring jobsite assembly allowed. In four or more piece enclosures over 70" wide, sections shall be secured together with mechanical "roto locks" of latch and receptacle configuration. Wood or "particle board" framing shall be cause for rejection. Enclosures over 80" wide will utilize internal aluminum extruded roof beams the full width of the enclosure for support. Enclosures over 150" wide will utilize adjustable floor to roof support jacks in addition to the roof beams. Insulation shall be min. 1 1/2" tk. (R10), unicellular, non-wicking, polyisocyanate, sprayed in place (not glued or pinned) to form a monolithic bond with metal framing and skin. Drains shall be sized for full port backflow discharge and designed for "one way" exit, inhibiting intrusion of debris and/or vermin. Enclosure shall be anchored to a concrete slab from within the enclosure with steel anchors and be lockable for security purposes.

Heat will protect the piping and equipment from exterior temperatures to -30°F and be thermostatically controlled. UL or ETL listed self-regulating cable(s) or wall mounted air heater(s) will be sized to maintain the equipment at +40°F, in accordance with N.F.P.A. 3-3.1.8 & 3-6.1.3.2. Heat source shall be mounted a minimum of 7" above the slab unless it is UL or ETL certified and NEC approved for submersion. Power source shall be protected with a ground fault interrupting receptacle, UL 943, N.E.M.A. 3R, installed by others inside the enclosure.

*Maximum size for ASSE 1060 certified enclosure is 172" IL x 87" IW x 85" IH. Enclosures larger than these dimensions are constructed in the same manner and design as the certified enclosures, but have not been lab tested and listed by ASSE.

Hot Box w/Heat	Old Hot Box w/Heat	Inside Width	Inside Length	Inside Height	# of Sections	Roto Locks	Roof Truss	Heat	Shipping Weight	Pad Size
HA055074057	HB3ED	55	74	57	2	X	X	2/1000W	510#	86 x 67
HA055085057	HB3EDS	55	85	57	2	X	X	2/1000W	585#	97 x 67
HA067090051	HB4ND	67	90	51	2	X	X	2/1500W	610#	102 x 79
HA067102067	HB4NDS	67	102	67	2	X	X	2/1500W	645#	114 x 79
HA067090058	HB4ED	67	90	58	2	X	X	2/1500W	640#	102 x 79
HA067102058	HB4EDS	67	102	58	2	X	X	2/1500W	650#	114 x 79
HA071105053	HB6ND	71	105	53	4	✓	X	2/1500W	665#	117 x 83
HA071125053	HB6NDS	71	125	53	4	✓	X	2/1500W	700#	137 x 83
HA071105064	HB6ED	71	105	64	4	✓	X	2/1500W	680#	117 x 83
HA071125064	HB6EDS	71	125	64	4	✓	X	2/1500W	740#	137 x 83
HA083123058	HB8ND	83	123	58	4	✓	✓	2/1900W	711#	130 x 95
HA083145058	HB8NDS	83	145	58	4	✓	✓	2/1900W	801#	154 x 95
HA083123074	HB8ED	83	123	74	4	✓	✓	2/1900W	849#	130 x 95
HA083145074	HB8EDS	83	145	74	4	✓	✓	2-1.5+2-1	954#	154 x 95
HA087144065	HB10ND	87	144	65	4	✓	✓	2-1.5+2-1	888#	154 x 99
HA087172065	HB10NDS	87	172	65	4	✓	✓	2-1.5+2-1	1200#	184 x 99
HA087144085	HB10ED	87	144	85	4	✓	✓	4/1500W	1300#	154 x 99
HA087172085	HB10EDS	87	172	85	4	✓	✓	4/1500W	1400#	184 x 99

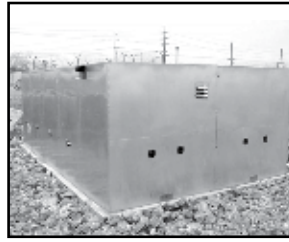
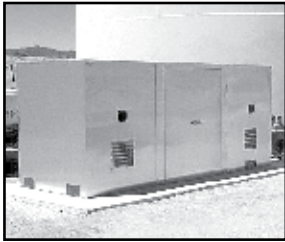
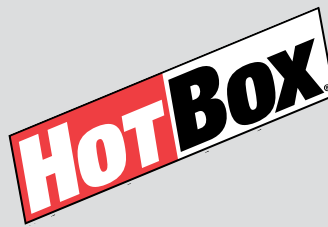
OPTIONS:					
OPTION	TYPE	SIZE	PHASE	VOLTAGE	QUANTITY
COLOR					
VENT(S)					
EXHAUST					
ALARM					
ALARM					
HEAT					
LIGHT(S)					
ALUM. GAUGE					
FLOOR JACKS					
OTHER					



MEMBERS OF:



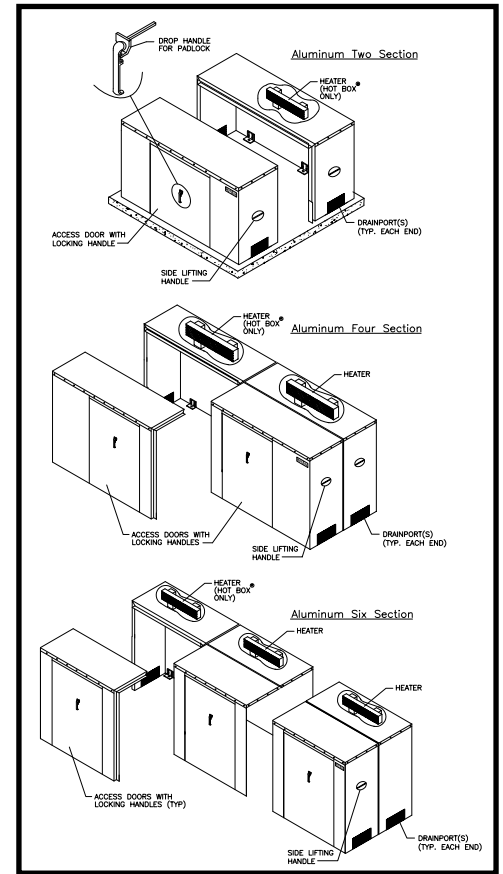
Job Name _____ Contractor _____
Job Location _____ Approval _____
Engineer _____ Contractor's P.O. No. _____
Approval _____ Representative _____



LARGE SECTIONAL ALUMINUM UNHEATED ENCLOSURES: SPECIFICATION:

The enclosure, certified to ASSE 1060*, shall be of min. .050" tk. reinforced stucco embossed aluminum sheeting (with optional .063" tk.), providing access through removable doors and being totally removable for maintenance purposes. A modular design with "tongue and groove" sections is required; with no panels requiring jobsite assembly allowed. In four or more piece enclosures over 70" wide, sections shall be secured together with mechanical "roto locks" of latch and receptacle configuration. Wood or "particle board" framing shall be cause for rejection. Enclosures over 80" wide will utilize internal aluminum extruded roof beams the full width of the enclosure for support. Enclosures over 150" wide will utilize adjustable floor to roof support jacks in addition to the roof beams. Insulation shall be min. 1 1/2" tk. (R10), unicellular, non-wicking, polyisocyanate, sprayed in place (not glued or pinned) to form a monolithic bond with metal framing and skin. Drains shall be sized for full port backflow discharge and designed for "one way" exit, inhibiting intrusion of debris and/or vermin. Enclosure shall be anchored to a concrete slab from within the enclosure with steel anchors and be lockable for security purposes.

*Maximum size for ASSE 1060 certified enclosure is 172" IL x 87" IW x 85" IH. Enclosures larger than these dimensions are constructed in the same manner and design as the certified enclosures, but have not been lab tested and listed by ASSE.



Lok Box w/No Heat	Old Lok Box w/No Heat	Inside Width	Inside Length	Inside Height	# of Sections	Roto Locks	Roof Truss	Shipping Weight	Pad Size
LA055074057	LB3ED	55	74	57	2	X	X	510#	86 x 67
LA055085057	LB3EDS	55	85	57	2	X	X	570#	97 x 67
LA067090051	LB4ND	67	90	51	2	X	X	610#	102 x 79
LA067102067	LB4NDS	67	102	67	2	X	X	645#	114 x 79
LA067090058	LB4ED	67	90	58	2	X	X	585#	102 x 79
LA067102058	LB4EDS	67	102	58	2	X	X	645#	114 x 79
LA071105053	LB6ND	71	105	53	4	✓	X	665#	117 x 83
LA071125053	LB6NDS	71	125	53	4	✓	X	700#	137 x 83
LA071105064	LB6ED	71	105	64	4	✓	X	680#	117 x 83
LA071125064	LB6EDS	71	125	64	4	✓	X	740#	137 x 83
LA083123058	LB8ND	83	123	58	4	✓	✓	711#	130 x 95
LA083145058	LB8NDS	83	145	58	4	✓	✓	801#	154 x 95
LA083123074	LB8ED	83	123	74	4	✓	✓	849#	130 x 95
LA083145074	LB8EDS	83	145	74	4	✓	✓	954#	154 x 95
LA087144065	LB10ND	87	144	65	4	✓	✓	888#	154 x 99
LA087172065	LB10NDS	87	172	65	4	✓	✓	1200#	184 x 99
LA087144085	LB10ED	87	144	85	4	✓	✓	1300#	154 x 99
LA087172085	LB10EDS	87	172	85	4	✓	✓	1400#	184 x 99

OPTIONS:					
OPTION	TYPE	SIZE	PHASE	VOLTAGE	QUANTITY
COLOR					
VENT(S)					
EXHAUST					
ALARM					
HEAT					
LIGHT(S)					
ALUM. GAUGE					
FLOOR JACKS					
OTHER					

MEMBERS OF:



Job Name _____ Contractor _____

Job Location _____ Approval _____

Engineer _____ Contractor's P.O. No. _____

Approval _____ Representative _____