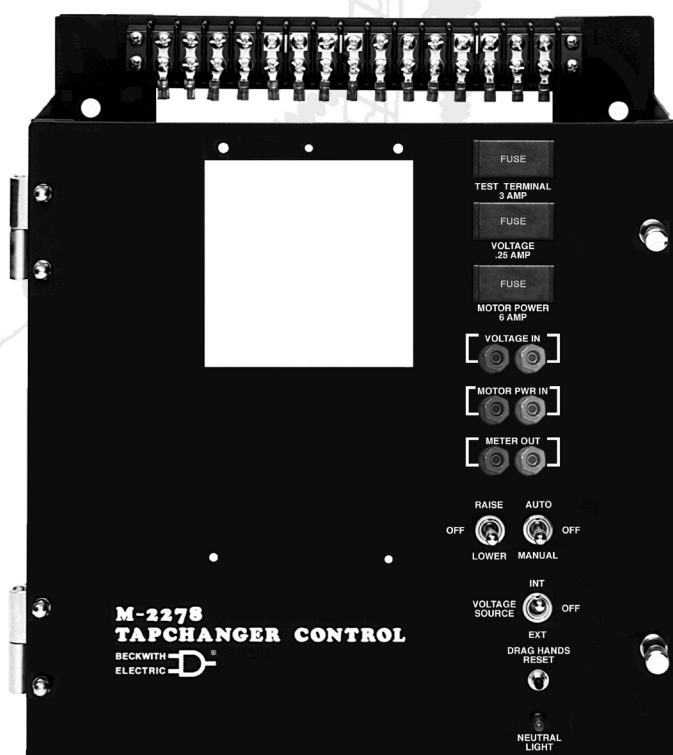


# Adapter Panel M-2278

**Adapts M-2001 Series Digital Tapchanger Control  
as a Replacement for Allis-Chalmers Surface-Mount  
LTC Transformer Controls**



- **Connects easily to the M-2001 Series Digital Tapchanger Control using mounting screws and 24-pin connector**
- **Provides direct mechanical replacement of Allis-Chalmers surface-mount LTC transformer controls**
- **Provides built-in CT shorting protection when the M-2001 Series Digital Tapchanger Control is removed**

The M-2278 is an adapter panel which, when combined with the M-2001 Series Digital Tapchanger Control, provides convenient direct replacement for Allis-Chalmers surface-mount LTC transformer controls. The M-2278 is designed to mount against a flat surface using four screws and includes a front door hinge for easy replacement of the control panel.

## Interface

External connections are made to a terminal block located on the top of the rear panel of the M-2278. Additional connections may be made to two terminal blocks located on the printed circuit board of the adapter panel. These terminal blocks provides access to auxiliary functions, including self-test alarm, user-programmable alarm, auto disable and manual raise/lower.

## Features

Separate fuses for test terminal, voltage sensing and motor power are on the front panel. Spare fuses for each are in the fuse holder.

Binding posts on the front panel allow easy connections for test procedures.

**RAISE/OFF/LOWER, AUTO/OFF/MANUAL** and **VOLTAGE SOURCE** switches, **DRAG HANDS RESET** button, and **NEUTRAL LIGHT** are standard.

**NEUTRAL LIGHT** will light to indicate that the regulator is in the neutral position for those products equipped with a circuit for this purpose.

## Testing Specifications

**High Voltage:** All input and output terminals will withstand 1500 Vac rms to chassis or instrument ground for one minute with a leakage current not to exceed 25 mA, for all terminals to ground. Input and output circuits are electrically isolated from each other, from other circuits and from ground.

**Surge Withstand Capability:** All input and output circuits are protected against system transients. Units pass all requirements of ANSI/IEEE C.37.90.1-1989 defining surge withstand capability.

**Radiated Electromagnetic Withstand Capability:** All units are protected against electromagnetic radiated interference from portable communications transceivers.

## Environmental

**Temperature Range:** Functionality is maintained from -40° to +85° C.

**Humidity:** Functionality is maintained under 95% relative humidity (non-condensing).

**Fungus Resistance:** A conformal printed circuit board coating inhibits fungus growth.

## Physical

**Mounting:** 11" high x 8" wide (27.9 cm x 20.3 cm) 4-hole pattern for surface mounting

**Size:** 13-7/8" high x 12-7/8" wide x 4-1/8" deep (35.2 cm x 32.7 cm x 10.5 cm)

**Approximate Weight:** 6 lbs, 3 oz (2.8 kg)

**Approximate Shipping Weight:** 8 lbs, 3 oz (3.7 kg)

**Approximate Weight with M-2001 Series Digital Tapchanger Control:** 10 lbs, 8 oz (4.8 kg)

**Approximate Shipping Weight with M-2001 Series Digital Tapchanger Control:** 14 lbs, 3 oz (6.44 kg)

## Warranty

The M-2278 Adapter Panel is covered by a five year warranty from date of shipment.

*Specification subject to change without notice.*

## BECKWITH ELECTRIC

6190 118th Avenue North • Largo, Florida 33773-3724 U.S.A.

PHONE (727) 544-2326

beckwithelectricssupport@hubbell.com

www.beckwithelectric.com

ISO 9001:2015



A proud member of the Hubbell family.