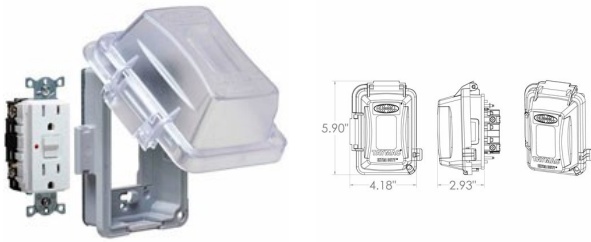




NON-METALLIC - IN-USE COVERS

**Receptacle / While-In-Use Cover Combos- Extra Duty[®]
Hubbell WRTR 15 AMP Duplex / Standard While-In-Use Cover**

C08.1



Catalog #: MG420C

APPLICATIONS

Designed for used whenever weatherproof protection is required while a receptacle is in use.

PRODUCT FEATURES

High quality Hubbell WRTR device included
Patented Quick-Fit[™] keyhole mounting system allows installation in under a minute.
Includes attached gasket and mounting hardware
Combo includes receptacle and cover / Kit includes box, receptacle and cover
Lockable tab

UL LISTED

File E313240

NEMA

3R Rated

NEC

2014 Compliant (article 406.9A & B) Extra Duty Rated

US PATENTS

6,420,654; 6,420,653

GENERAL PRODUCT INFORMATION

Color: Clear

CONFIGURATION

Gangs: 1

PRODUCT MEASUREMENTS

Depth: 2-3/4 in.
Wt. Ea. (Lbs.): 0.650

PACKAGING

Package Type: Shrink
Std. Pkg.: 8
Product UPC-A Labeled: Yes
Weight (Lbs. Per/C): 64.50
Ship Carton Length (in.): 18.75
Ship Carton Width (in.): 7.13
Ship Carton Height (in.): 5.75
Ctn Weight (Lbs.): 6.45
Pallet Qty: 840.00
UPC Number: 050169986455
I2of5: 50050169986450